

## Anti-FOH1B FOLH1B Antibody

Catalog Number: A15227

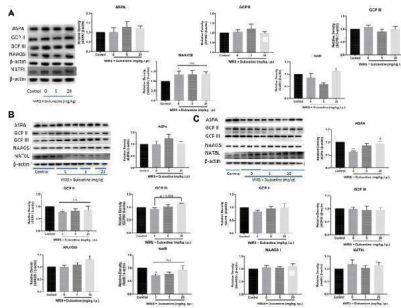
### Overview

Product Name	Anti-FOH1B FOLH1B Antibody
Reactive Species	Human
Description	Boster Bio Anti-FOH1B FOLH1B Antibody catalog # A15227. Tested in WB, ELISA applications. This antibody reacts with Human.
Application	ELISA, WB
Clonality	Polyclonal
Formulation	Liquid form in PBS containing 50% glycerol, and 0.02% sodium azide.
Storage Instructions	Store at -20°C for one year. For short term storage and frequent use, store at 4°C for up to one month. Avoid repeated freeze-thaw cycles.
Host	Rabbit
Uniprot ID	Q9HBA9

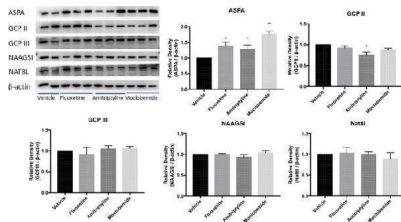
### Technical Details

Immunogen	Synthesized peptide derived from human protein at AA range: 370-450
Isotype	IgG
Form	Liquid
Concentration	1 mg/ml
Purification	FOH1B antibody was affinity-purified from rabbit antiserum by affinity-chromatography using epitope-specific immunogen.
Suggested Dilutions	WB 1:500-2000 ELISA 1:5000-20000

## Anti-FOH1B FOLH1B Antibody (A15227) Images



Effect of pretreatment with duloxetine on NAA-related enzyme expression in CeA in rats exposed to 6 h/3 h/0.5 h of WIRS. (A) Representative immunoblots of ASPA/GCP II/GCP III/NAAGSI/Nat8I performed in CeA lysates. Western blotting showed that duloxetine pretreatment had no effect on the expression level of these enzymes in CeA after 6 h of WIRS (n = 5 in control, 5 mg/kg duloxetine and 20 mg/kg duloxetine group, n = 6 in 0 mg/kg duloxetine group). (B) WIRS for 3 h decreased the expression of GCP II and Nat8I in CeA, and duloxetine did not modulate the expression of these two enzymes (n = 5 per group), while pretreatment with 20 mg/kg duloxetine increased NAAGSI and slightly increased GCP III expression in CeA exposed to WIRS, which did not change by WIRS (n = 6 per group). (C) WIRS for 0.5 h decreased the expression of ASPA in CeA, and pretreatment with 20 mg/kg duloxetine reversed this decrement (n = 6 per group). ASPA/GCP II/GCP III/NAAGSI/Nat8I was normalized to beta-actin. Values are expressed as means ± SEM. \* p < 0.05, \*\* p < 0.01, \*\*\* p < 0.001, compared with control group, compared with control group, # p < 0.05, compared with WIRS + vehicle group. Index in PubMed under a CC BY license. PMID: 35281914



Effects of other three kinds of monoamine-based antidepressants on NAA-related enzyme expression in CeA in rats exposed to 0.5 h of WIRS. Pretreatment with 10 mg/kg fluoxetine, 10 mg/kg amitriptyline, and 20 mg/kg moclobemide all increased ASPA levels in the condition of WIRS for 0.5 h, which were consistent with duloxetine. Amitriptyline also reduced GCPII level. ASPA/GCP II/GCP III/NAAGSI/Nat8I was normalized to beta-actin. Values are expressed as means ± SEM. \* p < 0.05, \*\* p < 0.01, compared with vehicle group. (n = 4 in fluoxetine group, n = 5 in moclobemide group, n = 6 in vehicle and amitriptyline group) Index in PubMed under a CC BY license. PMID: 35281914

Submit a product review to [Biocompare.com](https://www.biocompare.com)

Submit a review of this product to [Biocompare.com](https://www.biocompare.com) to receive a \$20 Amazon.com giftcard! Your reviews help your fellow scientists make the right decisions. Thank you for your contribution.



Anti-FOH1B FOLH1B Antibody

For Research Use Only. Not for use in diagnostic procedures.