

Anti-PSMAL Antibody (Center)

Catalog Number: A15227-1

About FOLH1B

PSMAL has both folate hydrolase and N-acetylated-alpha-linked-acidic dipeptidase (NAALADase) activity (By similarity). PSMAL exhibits a dipeptidyl-peptidase IV type activity

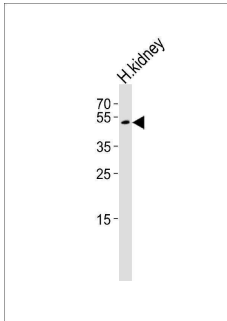
Overview

| | |
|----------------------|--|
| Product Name | Anti-PSMAL Antibody (Center) |
| Reactive Species | Human |
| Description | Boster Bio Anti-PSMAL Antibody (Center) (Catalog # A15227-1). Tested in IHC-P, WB, Flow Cytometry application(s). This antibody reacts with Human. |
| Application | Flow Cytometry, IHC-P, WB |
| Clonality | Polyclonal |
| Formulation | Purified polyclonal antibody supplied in PBS with 0.09% (W/V) sodium azide. |
| Storage Instructions | Maintain refrigerated at 2-8°C for up to 2 weeks. For long-term storage, store at -20°C in small aliquots to prevent freeze-thaw cycles. |
| Host | Rabbit |
| Uniprot ID | Q9HBA9 |

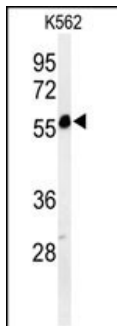
Technical Details

| | |
|----------------------------|---|
| Immunogen | This PSMAL antibody is generated from rabbits immunized with a KLH conjugated synthetic peptide between 155-183 amino acids from the Central region of human PSMAL. |
| Predicted Reactive Species | Mouse, Rat |
| Isotype | Rabbit IgG |
| Purification | This antibody is purified through a protein A column, followed by peptide affinity purification. |
| Suggested Dilutions | WB: 1:1000 IHC-P: 1:50-1:100 FC: 1:10-1:50 |

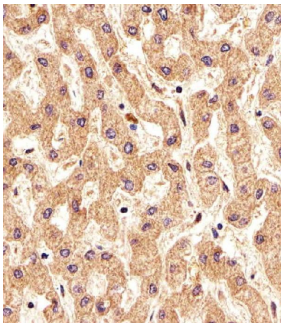
Anti-PSMAL Antibody (Center) (A15227-1) Images



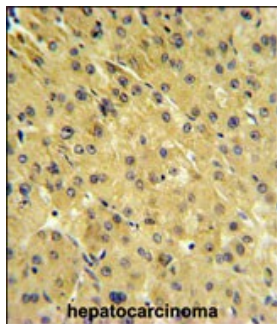
Western blot analysis of lysate from human kidney tissue lysate, using PSMAL Antibody (Center). A15227-1 was diluted at 1:1000. A goat anti-rabbit IgG H&L (HRP) at 1:10000 dilution was used as the secondary antibody. Lysate at 35ug.



Western blot analysis of PSMAL Antibody (Center) in K562 cell line lysates (35ug/lane).PSMAL (arrow) was detected using the purified Pab.

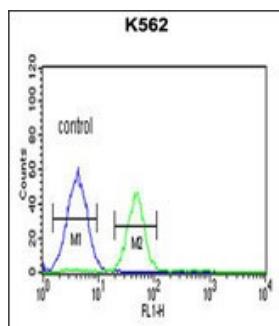


Immunohistochemical analysis of paraffin-embedded H. liver section using PSMAL Antibody (Center). A15227-1 was diluted at 1:25 dilution. A undiluted biotinylated goat polyvalent antibody was used as the secondary, followed by DAB staining.



PSMAL Antibody (Center) IHC analysis in formalin fixed and paraffin embedded hepatocarcinoma followed by peroxidase conjugation of the secondary antibody and DAB staining. This data demonstrates the use of the PSMAL Antibody (Center) for immunohistochemistry. Clinical relevance has not been evaluated.

PSMAL Antibody (Center) flow cytometric analysis of K562 cells (right histogram) compared to a negative control cell (left histogram).FITC-conjugated goat-anti-rabbit secondary antibodies were used for the analysis.



Submit a product review to Biocompare.com

Submit a review of this product to Biocompare.com to receive a \$20 Amazon.com giftcard! Your reviews help your fellow scientists make the right decisions. Thank you for your contribution.



Anti-PSMAL Antibody (Center)

For Research Use Only. Not for use in diagnostic procedures.