

Anti-Spred3 Antibody

Catalog Number: A15231

About SPRED3

Spred3 is a member of the Sprouty family, a group of proteins that act as negative regulators during development. Like Spred1 and Spred2, Spred3 contains an EVH1 domain in its amino terminus and a Sprouty-related cysteine-rich (SPR) domain in its C-terminus, but does not possess a functional c-kit binding domain (KBD). The Spred proteins have also been implicated in the negative feedback regulation of FGF signaling in embryogenesis and angiogenesis. Although Spred3 was initially reported to be expressed in brain, at least one report also indicates that Spred3 can be found in liver. At least two isoforms of Spred3 are known to exist.

Overview

Product Name	Anti-Spred3 Antibody
Reactive Species	Human
Description	Boster Bio Anti-Spred3 Antibody (Catalog # A15231). Tested in ELISA, WB, IHC-P, IF applications. This antibody reacts with Human.
Application	ELISA, IF, IHC-P, WB
Clonality	Polyclonal
Formulation	Spred3 Antibody is supplied in PBS containing 0.02% sodium azide.
Storage Instructions	Spred3 antibody can be stored at 4°C for three months and -20°C, stable for up to one year. Avoid repeated freeze-thaw cycles. Antibodies should not be exposed to prolonged high temperatures.
Host	Rabbit
Uniprot ID	Q2MJR0

Technical Details

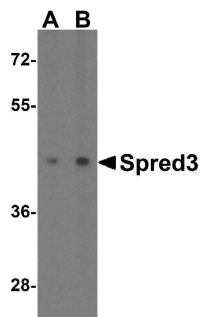
Immunogen	Spred3 antibody was raised against a 16 amino acid synthetic peptide near the center of the human Spred3. The immunogen is located within amino acids 140 - 190 of Spred3.
Predicted Reactive Species	Bovine
Cross Reactivity	This Spred3 antibody is predicted to have no cross-reactivity to Spred1 or Spred2.
Isotype	IgG
Form	Liquid
Concentration	1 mg/mL
Purification	Spred3 Antibody is affinity chromatography purified via peptide column.

Suggested Dilutions

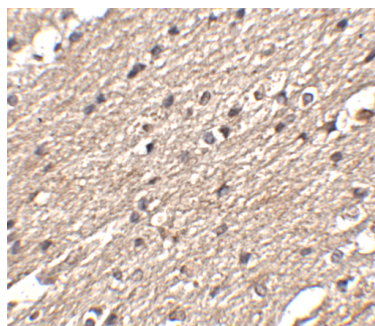
Spred3 antibody can be used for detection of Spred3 by Western blot at 2 - 4 ug/mL. Antibody can also be used for immunohistochemistry starting at 2.5 ug/mL. For immunofluorescence start at 20 ug/mL.

Antibody validated: Western Blot in mouse samples; Immunohistochemistry in human samples and Immunofluorescence in human samples. All other applications and species not yet tested. Optimal dilutions for each application should be determined by the researcher.

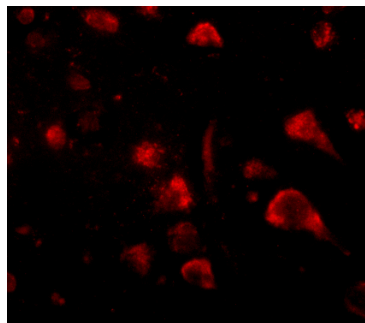
Anti-Spred3 Antibody (A15231) Images



Western blot analysis of Spred3 in mouse brain tissue lysate with Spred3 antibody at (A) 2 and (B) 4 ug/mL.



Immunohistochemistry of Spred3 in human brain tissue with Spred3 antibody at 2.5 ug/mL.



Immunofluorescence of Spred3 in human brain tissue with Spred3 antibody at 20 ug/mL.

Submit a product review to [Biocompare.com](https://www.biocompare.com)

Submit a review of this product to [Biocompare.com](https://www.biocompare.com) to receive a \$20 Amazon.com giftcard! Your reviews help your fellow scientists make the right decisions. Thank you for your contribution.



Anti-Spred3 Antibody

For Research Use Only. Not for use in diagnostic procedures.