

Anti-Rkhd4 MEX3A Antibody

Catalog Number: A15239

About MEX3A

Rkhd4, also known as MEX3A is a member of a novel family of four homologous human MEX3 proteins each containing two heterogeneous nuclear ribonucleoprotein K homology (KH) domains and one carboxy-terminal RING finger module. MEX3 proteins, including Rkhd4, are phosphoproteins that bind RNA through their KH domains and shuttle between the nucleus and the cytoplasm via the CRM1 export pathway. These proteins are a novel family of evolutionarily conserved RNA-binding proteins, differentially recruited to P bodies and potentially involved in post-transcriptional regulatory mechanisms. While Rkhd2 has been suggested to be associated with susceptibility to essential hypertension type 8, the function of Rkhd4 remains unknown. Rkhd3 and Rkhd4, but not Rkhd2, co-localize with both the hDcp1a decapping factor and Argonaute (Ago) proteins in processing bodies (P bodies), recently characterized as centers of mRNA turnover.

Overview

Product Name	Anti-Rkhd4 MEX3A Antibody
Reactive Species	Human, Mouse, Rat
Description	Boster Bio Anti-Rkhd4 MEX3A Antibody (Catalog # A15239). Tested in ELISA, WB, IHC-P applications. This antibody reacts with Human, Mouse, Rat.
Application	ELISA, IHC-P, WB
Clonality	Polyclonal
Formulation	Rkhd4 Antibody is supplied in PBS containing 0.02% sodium azide.
Storage Instructions	Rkhd4 antibody can be stored at 4°C for three months and -20°C, stable for up to one year. Avoid repeated freeze-thaw cycles. Antibodies should not be exposed to prolonged high temperatures.
Host	Rabbit
Uniprot ID	A1L020

Technical Details

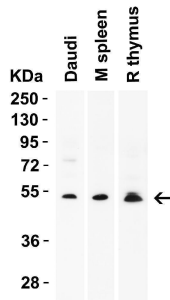
Immunogen	Rkhd4 antibody was raised against a 14 amino acid synthetic peptide from near the carboxy terminus of human Rkhd4. The immunogen is located within amino acids 420 - 470 of Rkhd4.
Predicted Reactive Species	Bovine
Isotype	IgG
Form	Liquid
Concentration	1 mg/mL
Purification	Rkhd4 Antibody is affinity chromatography purified via peptide column.

Suggested Dilutions

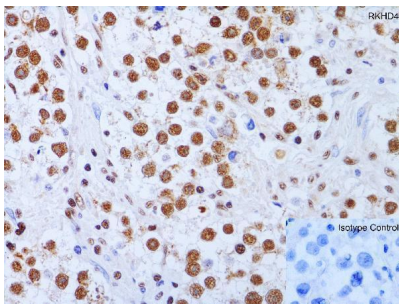
WB: 1-4 ug/mL; IHC-P: 1-2 ug/mL.

Antibody validated: Western Blot in human, mouse and rat samples; Immunohistochemistry in human, mouse, and rat samples. All other applications and species not yet tested.

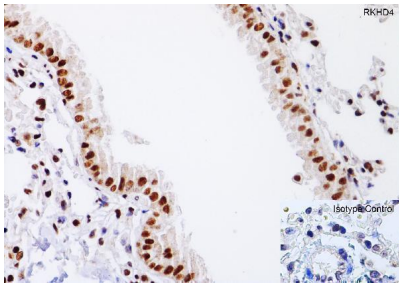
Anti-Rkhd4 MEX3A Antibody (A15239) Images



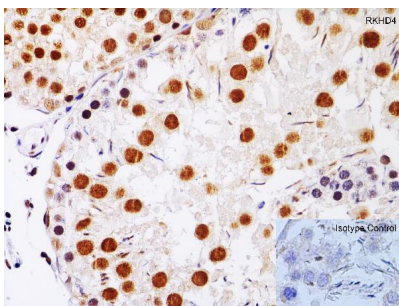
WB Validation in Human, Mouse and Rat Samples Loading: 15 ug of lysate Antibodies: RKHD4, A15239, 2 u g/mL, 1 h incubation at RT in 5% NFDM/TBST. Secondary: Goat Anti-Rabbit IgG HRP conjugate at 1:10000 dilution.



Immunohistochemistry Validation of RKHD4 in Human Testis
Immunohistochemical analysis of paraffin-embedded human testis tissue using anti-RKHD4 antibody (A15239) at 1 ug/ml. Tissue was fixed with formaldehyde and blocked with 10% serum for 1 h at RT; antigen retrieval was by heat mediation with a citrate buffer (pH6). Samples were incubated with primary antibody overnight at 4°C. A goat anti-rabbit IgG H&L (HRP) at 1/250 was used as secondary. Counter stained with Hematoxylin.



Immunohistochemistry Validation of RKHD4 in Mouse lung
Immunohistochemical analysis of paraffin-embedded mouse lung tissue using anti-RKHD4 antibody (A15239) at 1 ug/ml. Tissue was fixed with formaldehyde and blocked with 10% serum for 1 h at RT; antigen retrieval was by heat mediation with a citrate buffer (pH6). Samples were incubated with primary antibody overnight at 4°C. A goat anti-rabbit IgG H&L (HRP) at 1/250 was used as secondary. Counter stained with Hematoxylin.



Immunohistochemistry Validation of RKHD4 in Rat Testis
Immunohistochemical analysis of paraffin-embedded rat testis tissue using anti-RKHD4 antibody (A15239) at 1 ug/ml. Tissue was fixed with formaldehyde and blocked with 10% serum for 1 h at RT; antigen retrieval was by heat mediation with a citrate buffer (pH6). Samples were incubated with primary antibody overnight at 4°C. A goat anti-rabbit IgG H&L (HRP) at 1/250 was used as secondary. Counter stained with Hematoxylin.

Submit a product review to Biocompare.com

Submit a review of this product to Biocompare.com to receive a \$20 Amazon.com giftcard! Your reviews help your fellow scientists make the right decisions. Thank you for your contribution.



For Research Use Only. Not for use in diagnostic procedures.