

Anti-SAGE1 Antibody Picoband®

Catalog Number: A15250

About SAGE1

This gene belongs to a class of genes that are activated in tumors. These genes are expressed in tumors of different histologic types but not in normal tissues, except for spermatogenic cells and, for some, placenta. The proteins encoded by these genes appear to be strictly tumor specific, and hence may be excellent sources of antigens for cancer immunotherapy. This gene is expressed in sarcomas.

Overview

Product Name	Anti-SAGE1 Antibody Picoband®
Reactive Species	Human
Description	Boster Bio Anti-SAGE1 Antibody Picoband® catalog # A15250. Tested in ELISA, Flow Cytometry, IF, IHC, ICC, WB applications. This antibody reacts with Human. The brand Picoband indicates this is a premium antibody that guarantees superior quality, high affinity, and strong signals with minimal background in Western blot applications. Only our best-performing antibodies are designated as Picoband, ensuring unmatched performance.
Application	ELISA, Flow Cytometry, IF, IHC, ICC, WB
Clonality	Polyclonal
Formulation	Each vial contains 4 mg Trehalose, 0.9 mg NaCl, 0.2 mg Na ₂ HPO ₄ .
Storage Instructions	At -20°C for one year from date of receipt. After reconstitution, at 4°C for one month. It can also be aliquotted and stored frozen at -20°C for six months. Avoid repeated freezing and thawing.
Host	Rabbit
Uniprot ID	Q9NXZ1

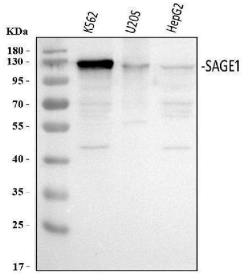
Technical Details

Immunogen	E.coli-derived human SAGE1 recombinant protein (Position: D94-K633).
Recommended Detection Systems	Boster recommends Enhanced Chemiluminescent Kit with anti-Rabbit IgG (EK1002) for Western blot, and HRP Conjugated anti-Rabbit IgG Super Vision Assay Kit (SV0002-1) for IHC(P) and ICC.
Cross Reactivity	No cross-reactivity with other proteins.
Isotype	Rabbit IgG
Form	Lyophilized
Concentration	Adding 0.2 ml of distilled water will yield a concentration of 500 µg/ml.
Purification	Immunogen affinity purified.

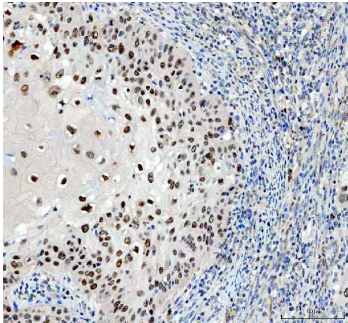
Suggested Dilutions

Western blot, 0.25-0.5 ug/ml, Human
Immunohistochemistry(Paraffin-embedded Section), 2-5 ug/ml, Human
Immunocytochemistry/Immunofluorescence, 5 ug/ml, Human
Flow Cytometry (Fixed), 1-3 ug/1x10⁶ cells, Human
ELISA, 0.1-0.5 ug/ml, -

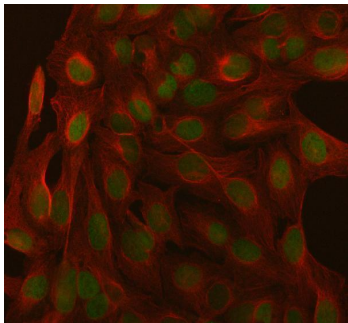
Anti-SAGE1 Antibody Picoband® (A15250) Images



Western blot analysis of SAGE1 using anti-SAGE1 antibody (A15250). Electrophoresis was performed on a 5-20% SDS-PAGE gel at 70V (Stacking gel) / 90V (Resolving gel) for 2-3 hours. The sample well of each lane was loaded with 30 ug of sample under reducing conditions. Lane 1: human K562 whole cell lysates, Lane 2: human U2OS whole cell lysates, Lane 3: human HepG2 whole cell lysates. After electrophoresis, proteins were transferred to a nitrocellulose membrane at 150 mA for 50-90 minutes. Blocked the membrane with 5% non-fat milk/TBS for 1.5 hour at RT. The membrane was incubated with rabbit anti-SAGE1 antigen affinity purified polyclonal antibody (Catalog # A15250) at 0.5 ug/mL overnight at 4°C, then washed with TBS-0.1%Tween 3 times with 5 minutes each and probed with a goat anti-rabbit IgG-HRP secondary antibody at a dilution of 1:5000 for 1.5 hour at RT. The signal is developed using an Enhanced Chemiluminescent detection (ECL) kit (Catalog # EK1002) with Tanon 5200 system. A specific band was detected for SAGE1 at approximately 125 kDa. The expected band size for SAGE1 is at 99 kDa.

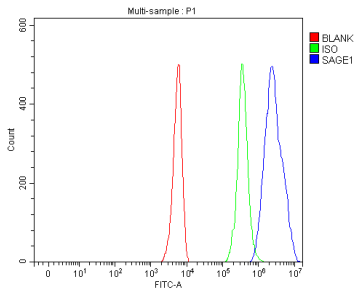


IHC analysis of SAGE1 using anti-SAGE1 antibody (A15250). SAGE1 was detected in a paraffin-embedded section of human laryngeal squamous cell carcinoma tissue. Heat mediated antigen retrieval was performed in EDTA buffer (pH 8.0, epitope retrieval solution). The tissue section was blocked with 10% goat serum. The tissue section was then incubated with 2 ug/ml rabbit anti-SAGE1 Antibody (A15250) overnight at 4°C. Peroxidase Conjugated Goat Anti-rabbit IgG was used as secondary antibody and incubated for 30 minutes at 37°C. The tissue section was developed using HRP Conjugated Rabbit IgG Super Vision Assay Kit (Catalog # SV0002) with DAB as the chromogen.



IF analysis of SAGE1 using anti-SAGE1 antibody (A15250) and anti-Beta Tubulin antibody (M01857-3). SAGE1 was detected in immunocytochemical section of U2OS cell. Enzyme antigen retrieval was performed using IHC enzyme antigen retrieval reagent (AR0022) for 15 mins. The cells were blocked with 10% goat serum. And then incubated with 5 ug/mL rabbit anti-SAGE1 Antibody (A15250) and mouse anti-Beta Tubulin antibody (M01857-3) overnight at 4°C. DyLight®488 Conjugated Goat Anti-Rabbit IgG (BA1127) and Cy3 Conjugated Goat Anti-Mouse IgG (BA1031) were used as secondary antibody at 1:500 dilution and incubated for 30 minutes at 37°C. Visualize using a fluorescence microscope and filter sets appropriate for the label used.

Flow Cytometry analysis of K562 cells using anti-SAGE1 antibody (A15250). Overlay histogram showing K562 cells stained with A15250 (Blue line). To facilitate intracellular staining, cells were fixed with 4% paraformaldehyde and



permeabilized with permeabilization buffer. The cells were blocked with 10% normal goat serum. And then incubated with rabbit anti-SAGE1 Antibody (A15250, 1 ug/1x10⁶ cells) for 30 min at 20°C. DyLight®488 conjugated goat anti-rabbit IgG (BA1127, 5-10 ug/1x10⁶ cells) was used as secondary antibody for 30 minutes at 20°C. Isotype control antibody (Green line) was rabbit IgG (1 ug/1x10⁶) used under the same conditions. Unlabelled sample without incubation with primary antibody and secondary antibody (Red line) was used as a blank control.

Submit a product review to Biocompare.com

Submit a review of this product to Biocompare.com to receive a \$20 Amazon.com giftcard! Your reviews help your fellow scientists make the right decisions. Thank you for your contribution.



Anti-SAGE1 Antibody

For Research Use Only. Not for use in diagnostic procedures.