

Anti-SLC35D3 Antibody

Catalog Number: A15258

About SLC35D3

The solute carrier family SLC35 consists of at least 17 proteins that act as nucleotide sugar transporters localized to the Golgi apparatus and endoplasmic reticulum. The novel protein SLC35D3 is highly homologous to SLC35D1 and SLC35D2, both of which transport UDP-glucuronic acid and UDP-N-acetylgalactosamine, suggesting that SLC35D3 is also involved in the transport of nucleotide sugars. It has been suggested that SLC35D3 regulates platelet dense granules, lysosome-related organelles which contain high concentrations of several biologically important low molecular weight molecules necessary for normal blood homeostasis.

Overview

Product Name	Anti-SLC35D3 Antibody
Reactive Species	Human, Mouse
Description	Boster Bio Anti-SLC35D3 Antibody (Catalog # A15258). Tested in ELISA, WB, ICC, IF applications. This antibody reacts with Human, Mouse.
Application	ELISA, IF, ICC, WB
Clonality	Polyclonal
Formulation	SLC35D3 Antibody is supplied in PBS containing 0.02% sodium azide.
Storage Instructions	SLC35D3 antibody can be stored at 4°C for three months and -20°C, stable for up to one year. Avoid repeated freeze-thaw cycles. Antibodies should not be exposed to prolonged high temperatures.
Host	Rabbit
Uniprot ID	Q5M8T2

Technical Details

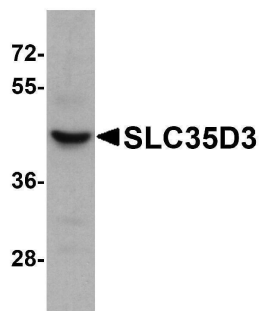
Immunogen	SLC35D3 antibody was raised against a 17 amino acid synthetic peptide near the carboxy terminus of human SLC35D3. The immunogen is located within the last 50 amino acids of SLC35D3.
Predicted Reactive Species	Bovine
Cross Reactivity	At least two isoforms of SLC35D3 are known to exist; this antibody will recognize both isoforms. SLC35D3 antibody is predicted to not cross-react with SLC35D1 or SLC35D2.
Isotype	IgG
Form	Liquid
Concentration	1 mg/mL
Purification	SLC35D3 Antibody is affinity chromatography purified via peptide column.

Suggested Dilutions

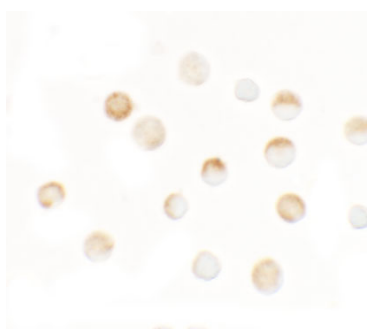
SLC35D3 antibody can be used for detection of SLC35D3 by Western blot at 1 - 2 ug/mL. Antibody can also be used for immunocytochemistry starting at 2.5 ug/mL. For immunofluorescence start at 5 ug/mL.

Antibody validated: Western Blot in human samples; Immunocytochemistry in human samples and Immunofluorescence in human samples. All other applications and species not yet tested. Optimal dilutions for each application should be determined by the researcher.

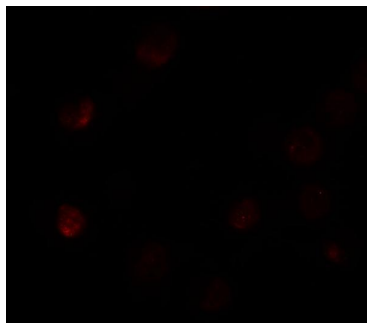
Anti-SLC35D3 Antibody (A15258) Images



Western blot analysis of SLC35D3 in HeLa cell lysate with SLC35D3 antibody at 1 ug/mL.



Immunocytochemistry of SLC35D3 in HeLa cells with SLC35D3 antibody at 2.5 ug/mL.



Immunofluorescence of SLC35D3 in HeLa cells with SLC35D3 antibody at 5 ug/mL.

Submit a product review to [Biocompare.com](https://www.biocompare.com)

Submit a review of this product to [Biocompare.com](https://www.biocompare.com) to receive a \$20 Amazon.com giftcard! Your reviews help your fellow scientists make the right decisions. Thank you for your contribution.



Anti-SLC35D3 Antibody

For Research Use Only. Not for use in diagnostic procedures.