

## Anti-TUSC1 Antibody Picoband®

Catalog Number: A15296-1

### About TUSC1

This gene is located within the region of chromosome 9p that harbors tumor suppressor genes critical in carcinogenesis. It is an intronless gene which is downregulated in non-small-cell lung cancer and small-cell lung cancer cell lines, suggesting that it may play a role in lung tumorigenesis.

### Overview

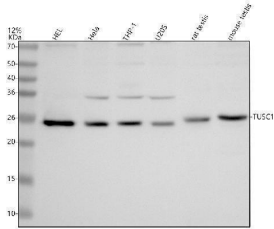
Product Name	Anti-TUSC1 Antibody Picoband®
Reactive Species	Human, Mouse, Rat
Description	Boster Bio Anti-TUSC1 Antibody Picoband® catalog # A15296-1. Tested in WB, IP, ELISA applications. This antibody reacts with Human, Mouse, Rat. The brand Picoband indicates this is a premium antibody that guarantees superior quality, high affinity, and strong signals with minimal background in Western blot applications. Only our best-performing antibodies are designated as Picoband, ensuring unmatched performance.
Application	ELISA, IP, WB
Clonality	Polyclonal
Formulation	Each vial contains 4 mg Trehalose, 0.9 mg NaCl, 0.2 mg Na <sub>2</sub> HPO <sub>4</sub> .
Storage Instructions	At -20°C for one year from date of receipt. After reconstitution, at 4°C for one month. It can also be aliquotted and stored frozen at -20°C for six months. Avoid repeated freezing and thawing.
Host	Rabbit
Uniprot ID	Q2TAM9

### Technical Details

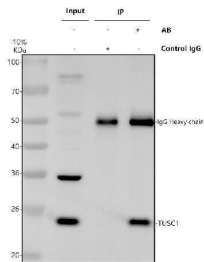
Immunogen	E.coli-derived human TUSC1 recombinant protein (Position: A54-L209). Human TUSC1 shares 73.7% amino acid (aa) sequence identity with mouse TUSC1.
Form	Lyophilized
Concentration	Adding 0.2 ml of distilled water will yield a concentration of 500 ug/ml.
Purification	Immunogen affinity purified.
Suggested Dilutions	Western blot, 0.25-0.5 ug/ml, Human, Mouse, Rat Immunoprecipitation, 0.5-2 ug/ml, Human ELISA, 0.1-0.5 ug/ml



## Anti-TUSC1 Antibody Picoband® (A15296-1) Images



Western blot analysis of TUSC1 using anti-TUSC1 antibody (A15296-1). Electrophoresis was performed on a 12% SDS-PAGE gel at 80V (Stacking gel) / 120V (Resolving gel) for 2 hours. The sample well of each lane was loaded with 30 ug of sample under reducing conditions. Lane 1: human HEL whole cell lysates, Lane 2: human Hela whole cell lysates, Lane 3: human THP-1 whole cell lysates, Lane 4: human U2OS whole cell lysates, Lane 5: rat testis tissue lysates, Lane 6: mouse testis tissue lysates. After electrophoresis, proteins were transferred to a nitrocellulose membrane at 150 mA for 50-90 minutes. Blocked the membrane with 5% non-fat milk/TBS for 1.5 hour at RT. The membrane was incubated with rabbit anti-TUSC1 antigen affinity purified polyclonal antibody (A15296-1) at 0.5 ug/mL overnight at 4°C, then washed with TBS-0.1% Tween 3 times with 5 minutes each and probed with a goat anti-rabbit IgG-HRP secondary antibody at a dilution of 1:5000 for 1.5 hour at RT. The signal is developed using an ECL Plus Western Blotting Substrate (Catalog # AR1196-200) with Tanon 5200 system. A specific band was detected for TUSC1 at approximately 25 kDa. The expected band size for TUSC1 is at 23 kDa.



Immunoprecipitating TUSC1 in HeLa whole cell lysate. Western blot analysis of TUSC1 using anti-TUSC1 antibody (A15296-1). Lane 1: HeLa whole cell lysates (30ug), Lane 2: Rabbit control IgG instead of anti-TUSC1 antibody in HeLa whole cell lysate, Lane 3: anti-TUSC1 antibody (2ug) + HeLa whole cell lysate (500ug). After electrophoresis, proteins were transferred to a membrane. Then the membrane was incubated with rabbit anti-TUSC1 antigen affinity purified polyclonal antibody (A15296-1) at a dilution of 0.5 ug/mL and probed with a goat anti-rabbit IgG-HRP secondary antibody (Catalog # BA1054). The signal is developed using ECL Plus Western Blotting Substrate (Catalog # AR1197). A specific band was detected for TUSC1 at approximately 25 kDa. The expected band size for TUSC1 is at 23 kDa.

### Submit a product review to [Biocompare.com](https://www.biocompare.com)

Submit a review of this product to [Biocompare.com](https://www.biocompare.com) to receive a \$20 Amazon.com giftcard! Your reviews help your fellow scientists make the right decisions. Thank you for your contribution.



### Anti-TUSC1 Antibody

For Research Use Only. Not for use in diagnostic procedures.