

Anti-MOSPD1 Antibody

Catalog Number: A15298

About MOSPD1

The Motile sperm domain-containing protein 1 (MOSPD1) is part of a family of proteins defined by the presence of a major sperm protein (MSP) domain and two transmembrane domains. MOSPD1 codes for a small protein that localizes to the endoplasmic reticulum (ER) and the Golgi apparatus and has been suggested to play a role in the developmental regulation at the switch between mesenchymal and epithelial cells.

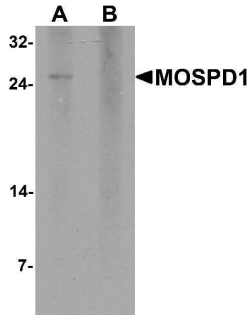
Overview

Product Name	Anti-MOSPD1 Antibody
Reactive Species	Human, Mouse, Rat
Description	Boster Bio Anti-MOSPD1 Antibody (Catalog # A15298). Tested in ELISA, WB, IHC-P, IF applications. This antibody reacts with Human, Mouse, Rat.
Application	ELISA, IF, IHC-P, WB
Clonality	Polyclonal
Formulation	MOSPD1 Antibody is supplied in PBS containing 0.02% sodium azide.
Storage Instructions	MOSPD1 antibody can be stored at 4°C for three months and -20°C, stable for up to one year.
Host	Rabbit
Uniprot ID	Q9UJG1

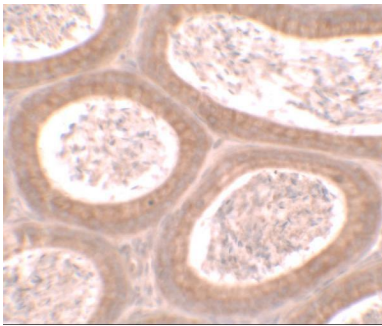
Technical Details

Immunogen	MOSPD1 antibody was raised against a 19 amino acid peptide near the center of human MOSPD1. The immunogen is located within amino acids 110 - 160 of MOSPD1.
Predicted Reactive Species	Bovine
Isotype	IgG
Form	Liquid
Concentration	1 mg/mL
Purification	MOSPD1 Antibody is affinity chromatography purified via peptide column.
Suggested Dilutions	MOSPD1 Antibody can be used for detection of MOSPD1 by Western blot at 1 ug/mL. Antibody validated: Western Blot in human samples; Immunohistochemistry in mouse samples and Immunofluorescence in mouse samples. All other applications and species not yet tested. Optimal dilutions for each application should be determined by the researcher.

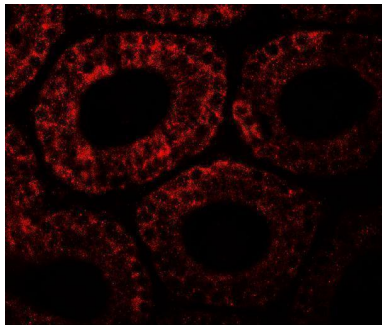
Anti-MOSPD1 Antibody (A15298) Images



Western blot analysis of MOSPD1 in human brain tissue lysate with MOSPD1 antibody at 1 ug/mL in (A) the absence and (B) the presence of blocking peptide.



Immunohistochemistry of MOSPD1 in mouse testis tissue with MOSPD1 antibody at 2.5 ug/ml.



Immunofluorescence of MOSPD1 in mouse testis tissue with MOSPD1 antibody at 20 ug/ml.

Submit a product review to [Biocompare.com](https://www.biocompare.com)

Submit a review of this product to [Biocompare.com](https://www.biocompare.com) to receive a \$20 Amazon.com giftcard! Your reviews help your fellow scientists make the right decisions. Thank you for your contribution.



Anti-MOSPD1 Antibody

For Research Use Only. Not for use in diagnostic procedures.