

Anti-F-box/LRR-repeat protein 16 FBXL16 Antibody

Catalog Number: A15331

About FBXL16

FBXL16 (F-box and leucine-rich repeat protein 16), a member of the F-box protein family, is a probable substrate-recognition component of the SCF (SKP1-CUL1-F-box protein)-type E3 ubiquitin ligase complex. It is characterized by an approximately 40-amino acid F-box motif. F-box proteins interact with SKP1 through the F-box, and they interact with ubiquitination targets through other protein interaction domains. FBXL16 is a novel E2F1-regulated gene in crucial cell cycle regulation pathways.

Overview

Product Name	Anti-F-box/LRR-repeat protein 16 FBXL16 Antibody
Reactive Species	Human, Mouse, Rat
Description	Boster Bio Anti-F-box/LRR-repeat protein 16 FBXL16 Antibody (Catalog # A15331). Tested in ELISA, WB, IHC-P, IF applications. This antibody reacts with Human, Mouse, Rat.
Application	ELISA, IF, IHC-P, WB
Clonality	Polyclonal
Formulation	FBXL16 Antibody is supplied in PBS containing 0.02% sodium azide.
Storage Instructions	Antibody can be stored at 4°C up to one year. Antibodies should not be exposed to prolonged high temperatures.
Host	Rabbit
Uniprot ID	Q8N461

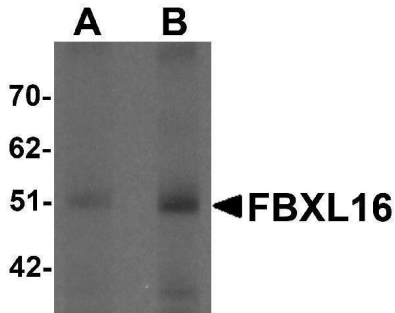
Technical Details

Immunogen	FBXL16 antibody was raised against an 18 amino acid synthetic peptide near the carboxy terminus of human FBXL16. The immunogen is located within the last 50 amino acids of FBXL16.
Predicted Reactive Species	Bovine
Cross Reactivity	FBXL16 antibody is predicted to not cross-react with other F-box protein family members.
Isotype	IgG
Form	Liquid
Concentration	1 mg/mL
Purification	FBXL16 Antibody is affinity chromatography purified via peptide column.
Suggested Dilutions	FBXL16 antibody can be used for detection of FBXL16 by Western blot at 0.5 - 1 ug/mL. Antibody

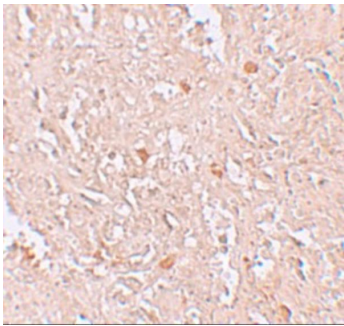
can also be used for immunohistochemistry starting at 5 ug/mL. For immunofluorescence start at 20 ug/mL.

Antibody validated: Western Blot in human samples; Immunohistochemistry in human samples and Immunofluorescence in human samples. All other applications and species not yet tested. Optimal dilutions for each application should be determined by the researcher.

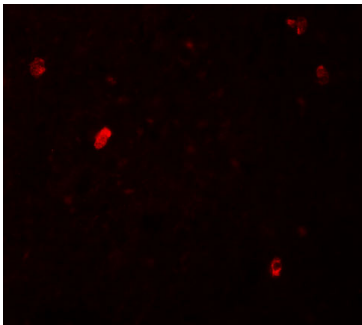
Anti-F-box/LRR-repeat protein 16 FBXL16 Antibody (A15331) Images



Western blot analysis of FBXL16 in human spleen tissue lysate with FBXL16 antibody at (A) 0.5 and (B) 1 ug/mL.



Immunohistochemistry of FBXL16 in human spleen tissue with FBXL16 antibody at 5 ug/mL.



Immunofluorescence of FBXL16 in human spleen tissue with FBXL16 antibody at 20 ug/mL.

Submit a product review to [Biocompare.com](https://www.biocompare.com)

Submit a review of this product to [Biocompare.com](https://www.biocompare.com) to receive a \$20 Amazon.com giftcard! Your reviews help your fellow scientists make the right decisions. Thank you for your contribution.



Anti-F-box/LRR-repeat protein 16 FBXL16 Antibody

For Research Use Only. Not for use in diagnostic procedures.