

Anti-RSBN1 Antibody (N-term)

Catalog Number: A15336

About RSBN1

PSMAL has both folate hydrolase and N-acetylated-alpha-linked-acidic dipeptidase (NAALADase) activity (By similarity). PSMAL exhibits a dipeptidyl-peptidase IV type activity

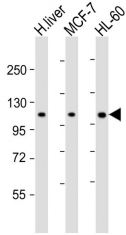
Overview

Product Name	Anti-RSBN1 Antibody (N-term)
Reactive Species	Human
Description	Boster Bio Anti-RSBN1 Antibody (N-term) (Catalog # A15336). Tested in WB, IHC-P, Flow Cytometry application(s). This antibody reacts with Human.
Application	Flow Cytometry, IHC-P, WB
Clonality	Polyclonal
Formulation	Purified polyclonal antibody supplied in PBS with 0.09% (W/V) sodium azide.
Storage Instructions	Maintain refrigerated at 2-8°C for up to 2 weeks. For long-term storage, store at -20°C in small aliquots to prevent freeze-thaw cycles.
Host	Rabbit
Uniprot ID	Q5VWQ0

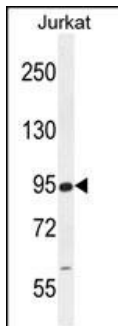
Technical Details

Immunogen	This RSBN1 antibody is generated from rabbits immunized with a KLH conjugated synthetic peptide between 51-78 amino acids from the N-terminal region of human RSBN1.
Predicted Reactive Species	Mouse, Rat
Isotype	Rabbit IgG
Purification	This antibody is purified through a protein A column, followed by peptide affinity purification.
Suggested Dilutions	WB: 1:2000 IHC-P: 1:25 FC: 1:10-1:50

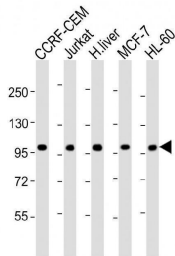
Anti-RSBN1 Antibody (N-term) (A15336) Images



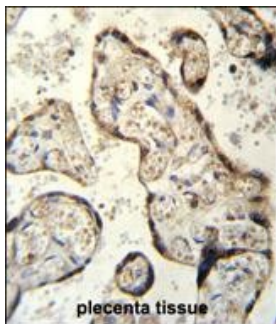
All lanes : Anti-RSBN1 Antibody (N-term) at 1:2000 dilution
Lane 1: human liver lysate
Lane 2: MCF-7 whole cell lysate
Lane 3: HL-60 whole cell lysate
Lysates/proteins at 20 µg per lane. Secondary Goat Anti-Rabbit IgG, (H+L), Peroxidase conjugated at 1/10000 dilution. Predicted band size : 90 kDa
Blocking/Dilution buffer: 5% NFDN/TBST.



RSBN1 Antibody (N-term) (Cat. #A15336) western blot analysis in Jurkat cell line lysates (35ug/lane). This demonstrates the RSBN1 antibody detected the RSBN1 protein (arrow).

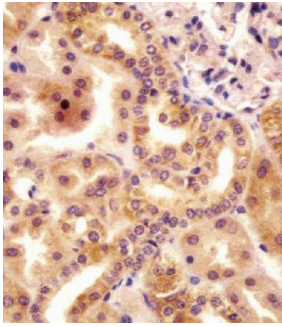


All lanes : Anti-RSBN1 Antibody (N-term) at 1:2000 dilution
Lane 1: CCRF-CEM whole cell lysate
Lane 2: Jurkat whole cell lysate
Lane 3: human liver lysate
Lane 4: MCF-7 whole cell lysate
Lane 5: HL-60 whole cell lysate
Lysates/proteins at 20 µg per lane. Secondary Goat Anti-Rabbit IgG, (H+L), Peroxidase conjugated at 1/10000 dilution. Predicted band size : 90 kDa
Blocking/Dilution buffer: 5% NFDN/TBST.

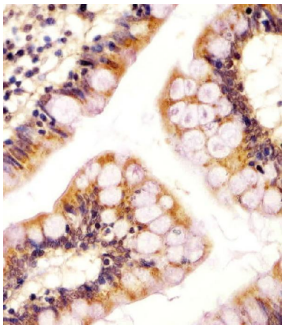


RSBN1 Antibody (N-term) (Cat. #A15336) immunohistochemistry analysis in formalin fixed and paraffin embedded human placenta tissue followed by peroxidase conjugation of the secondary antibody and DAB staining. This data demonstrates the use of RSBN1 Antibody (N-term) for immunohistochemistry. Clinical relevance has not been evaluated.

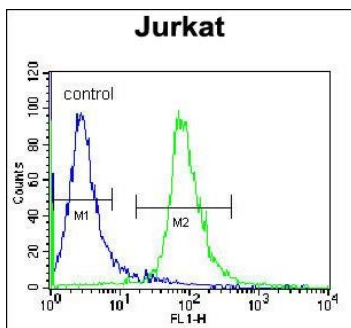
A15336 staining RSBN1 in human kidney tissue sections by Immunohistochemistry (IHC-P -paraformaldehyde-fixed, paraffin-embedded sections). Tissue was fixed with formaldehyde and blocked with 3% BSA for 0.5 hour at room temperature; antigen retrieval was by heat mediation with a citrate buffer (pH6). Samples were incubated with primary antibody (1/25) for 1 hours at 37°C. A undiluted



biotinylated goat polyvalent antibody was used as the secondary antibody.



A15336 staining RSBN1 in human colon tissue sections by Immunohistochemistry (IHC-P -paraformaldehyde-fixed, paraffin-embedded sections). Tissue was fixed with formaldehyde and blocked with 3% BSA for 0.5 hour at room temperature; antigen retrieval was by heat mediation with a citrate buffer (pH6). Samples were incubated with primary antibody (1/25) for 1 hours at 37°C. A undiluted biotinylated goat polyvalent antibody was used as the secondary antibody.



RSBN1 Antibody (N-term) (Cat. #A15336) flow cytometric analysis of Jurkat cells (right histogram) compared to a negative control cell (left histogram). FITC-conjugated donkey-anti-rabbit secondary antibodies were used for the analysis.

Submit a product review to Biocompare.com

Submit a review of this product to Biocompare.com to receive a \$20 Amazon.com giftcard! Your reviews help your fellow scientists make the right decisions. Thank you for your contribution.



Anti-RSBN1 Antibody (N-term)

For Research Use Only. Not for use in diagnostic procedures.