

Anti-METT5D1/METTL15 Antibody Picoband®

Catalog Number: A15360-1

About METTL15

Predicted to enable rRNA (cytosine-N4-)-methyltransferase activity. Predicted to be involved in rRNA base methylation. Predicted to be located in mitochondrial matrix. Predicted to be integral component of membrane.

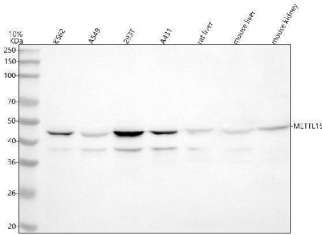
Overview

Product Name	Anti-METT5D1/METTL15 Antibody Picoband®
Reactive Species	Human, Mouse, Rat
Description	Boster Bio Anti-METT5D1/METTL15 Antibody Picoband® catalog # A15360-1. Tested in WB,ELISA applications. This antibody reacts with Human, Mouse, Rat. The brand Picoband indicates this is a premium antibody that guarantees superior quality, high affinity, and strong signals with minimal background in Western blot applications. Only our best-performing antibodies are designated as Picoband, ensuring unmatched performance.
Application	ELISA, WB
Clonality	Polyclonal
Formulation	Each vial contains 4 mg Trehalose, 0.9 mg NaCl, 0.2 mg Na ₂ HPO ₄ .
Storage Instructions	At -20°C for one year from date of receipt. After reconstitution, at 4°C for one month. It can also be aliquotted and stored frozen at -20°C for six months. Avoid repeated freezing and thawing.
Host	Rabbit
Uniprot ID	P0C7V9

Technical Details

Immunogen	E.coli-derived human METT5D1/METTL15 recombinant protein (Position: R200-L407). Human METTL15 shares 87% amino acid (aa) sequence identity with mouse METTL15.
Recommended Detection Systems	Boster recommends Enhanced Chemiluminescent Kit with anti-Rabbit IgG (EK1002) for Western blot.
Form	Lyophilized
Concentration	Adding 0.2 ml of distilled water will yield a concentration of 500 ug/ml.
Purification	Immunogen affinity purified.
Suggested Dilutions	Western blot, 0.25-0.5 ug/ml, Human, Mouse, Rat ELISA, 0.1-0.5 ug/ml, -

Anti-METT5D1/METTL15 Antibody Picoband® (A15360-1) Images



Western blot analysis of METT5D1/METTL15 using anti-METT5D1/METTL15 antibody (A15360-1). Electrophoresis was performed on a 5-20% SDS-PAGE gel at 70V (Stacking gel) / 90V (Resolving gel) for 2-3 hours. The sample well of each lane was loaded with 30 ug of sample under reducing conditions. Lane 1: human K562 whole cell lysates, Lane 2: human A549 whole cell lysates, Lane 3: human 293T whole cell lysates, Lane 4: human A431 whole cell lysates, Lane 5: rat liver tissue lysates, Lane 6: mouse liver tissue lysates, Lane 7: mouse kidney tissue lysates. After electrophoresis, proteins were transferred to a nitrocellulose membrane at 150 mA for 50-90 minutes. Blocked the membrane with 5% non-fat milk/TBS for 1.5 hour at RT. The membrane was incubated with rabbit anti-METT5D1/METTL15 antigen affinity purified polyclonal antibody (Catalog # A15360-1) at 0.5 ug/mL overnight at 4°C, then washed with TBS-0.1%Tween 3 times with 5 minutes each and probed with a goat anti-rabbit IgG-HRP secondary antibody at a dilution of 1:5000 for 1.5 hour at RT. The signal is developed using an Enhanced Chemiluminescent detection (ECL) kit (Catalog # EK1002) with Tanon 5200 system. A specific band was detected for METT5D1/METTL15 at approximately 46 kDa. The expected band size for METT5D1/METTL15 is at 46 kDa.

Submit a product review to Biocompare.com

Submit a review of this product to Biocompare.com to receive a \$20 Amazon.com giftcard! Your reviews help your fellow scientists make the right decisions. Thank you for your contribution.



Anti-METT5D1/METTL15 Antibody

For Research Use Only. Not for use in diagnostic procedures.