

Anti-PPAPDC3 PLPP7 Antibody

Catalog Number: A15380

About PPAPDC3

PPAPDC3, also known as nuclear envelope transmembrane protein 39 (NET39), was initially discovered in an in silico screen for secreted or membrane proteins. It is a member of the PAP2 superfamily of phosphatases and haloperoxidases. PPAPDC3 has recently been shown to act as a negative regulator of myoblast differentiation by diminishing the activity of the mammalian target of rapamycin TOR. PPAPDC3 is highly expressed in cardiac and skeletal muscle and becomes strongly upregulated during cultured myoblast differentiation tissues. Overexpression of PPAPDC3 in myoblasts repressed myogenesis while knockdown by RNA interference promoted differentiation indicating its part in the regulatory mechanism for myogenesis.

Overview

Product Name	Anti-PPAPDC3 PLPP7 Antibody
Reactive Species	Human, Mouse, Rat
Description	Boster Bio Anti-PPAPDC3 PLPP7 Antibody (Catalog # A15380). Tested in ELISA, WB, IF applications. This antibody reacts with Human, Mouse, Rat.
Application	ELISA, IF, WB
Clonality	Polyclonal
Formulation	PPAPDC3 Antibody is supplied in PBS containing 0.02% sodium azide.
Storage Instructions	PPAPDC3 antibody can be stored at 4°C for three months and -20°C, stable for up to one year. Avoid repeated freeze-thaw cycles. Antibodies should not be exposed to prolonged high temperatures.
Host	Rabbit
Uniprot ID	Q8NBV4

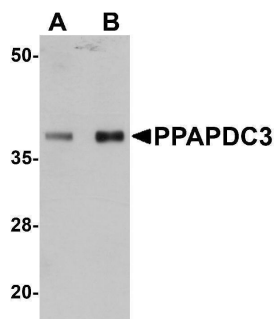
Technical Details

Immunogen	PPAPDC3 antibody was raised against a 19 amino acid synthetic peptide from near the amino of terminus human PPAPDC3. The immunogen is located within the first 50 amino acids of PPAPDC3.
Predicted Reactive Species	Bovine
Isotype	IgG
Form	Liquid
Concentration	1 mg/mL
Purification	PPAPDC3 Antibody is affinity chromatography purified via peptide column.

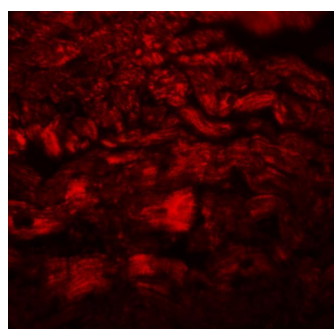
Suggested Dilutions

PPAPDC3 antibody can be used for detection of PPAPDC3 by Western blot at 1 - 2 ug/mL. For immunofluorescence start at 20 ug/mL.
Antibody validated: Western Blot in mouse samples and Immunofluorescence in mouse samples. All other applications and species not yet tested. Optimal dilutions for each application should be determined by the researcher.

Anti-PPAPDC3 PLPP7 Antibody (A15380) Images



Western blot analysis of PPAPDC3 in mouse heart tissue lysate with PPAPDC3 antibody at (A) 1 and (B) 2 ug/mL.



Immunofluorescence of PPAPDC3 in mouse heart tissue with PPAPDC3 antibody at 20 ug/mL.

Submit a product review to [Biocompare.com](https://www.biocompare.com)

Submit a review of this product to [Biocompare.com](https://www.biocompare.com) to receive a \$20 Amazon.com giftcard! Your reviews help your fellow scientists make the right decisions. Thank you for your contribution.



Anti-PPAPDC3 PLPP7 Antibody

For Research Use Only. Not for use in diagnostic procedures.