

## Anti-KRT28 Antibody (C-term)

Catalog Number: A15408

### About KRT28

This gene encodes a member of the type I (acidic) keratin family, which belongs to the superfamily of intermediate filament (IF) proteins. Keratins are heteropolymeric structural proteins which form the intermediate filament. These filaments, along with actin microfilaments and microtubules, compose the cytoskeleton of epithelial cells. The type I keratin genes are clustered in a region of chromosome 17q12-q21.

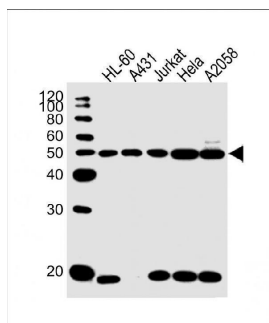
### Overview

Product Name	Anti-KRT28 Antibody (C-term)
Reactive Species	Human
Description	Boster Bio Anti-KRT28 Antibody (C-term) (Catalog # A15408). Tested in WB application(s). This antibody reacts with Human.
Application	WB
Clonality	Polyclonal
Formulation	Purified polyclonal antibody supplied in PBS with 0.09% (W/V) sodium azide.
Storage Instructions	Maintain refrigerated at 2-8°C for up to 2 weeks. For long-term storage, store at -20°C in small aliquots to prevent freeze-thaw cycles.
Host	Rabbit
Uniprot ID	Q7Z3Y7

### Technical Details

Immunogen	This KRT28 antibody is generated from rabbits immunized with a KLH conjugated synthetic peptide between 432-460 amino acids from the C-terminal region of human KRT28.
Predicted Reactive Species	Mouse, Rat
Isotype	Rabbit IgG
Purification	This antibody is purified through a protein A column, followed by peptide affinity purification.
Suggested Dilutions	WB: 1:1000

## Anti-KRT28 Antibody (C-term) (A15408) Images



All lanes : Anti-KRT28 Antibody (C-term) at 1:1000 dilution  
Lane 1: HL-60 whole cell lysate  
Lane 2: A431 whole cell lysate  
Lane 3: Jurkat whole cell lysate  
Lane 4: Hela whole cell lysate  
Lane 5: A2058 whole cell lysate  
Lysates/proteins at 20 µg per lane. Secondary Goat Anti-Rabbit IgG, (H+L), Peroxidase conjugated at 1/10000 dilution. Predicted band size : 51 kDa  
Blocking/Dilution buffer: 5% NFD/MTBST.

### Submit a product review to Biocompare.com

Submit a review of this product to Biocompare.com to receive a \$20 Amazon.com giftcard! Your reviews help your fellow scientists make the right decisions. Thank you for your contribution.



Anti-KRT28 Antibody (C-term)

For Research Use Only. Not for use in diagnostic procedures.