

## Anti-Integrator complex subunit 2 INTS2 Antibody

Catalog Number: A15434

### Overview

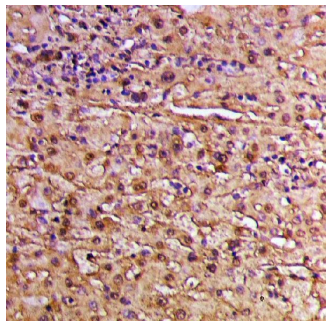
Product Name	Anti-Integrator complex subunit 2 INTS2 Antibody
Reactive Species	Human
Description	Boster Bio Anti-Integrator complex subunit 2 INTS2 Antibody catalog # A15434. Tested in IHC applications. This antibody reacts with Human.
Application	IHC
Clonality	Polyclonal
Formulation	Rabbit IgG, 1mg/ml in PBS with 0.02% sodium azide, 50% glycerol, pH7.2
Storage Instructions	Store at -20°C for one year. For short term storage and frequent use, store at 4°C for up to one month. Avoid repeated freeze-thaw cycles.
Host	Rabbit
Uniprot ID	Q9H0H0

### Technical Details

Immunogen	Synthetic peptide, corresponding to amino acids 50-100 of Human INTS2.
Isotype	IgG
Form	Liquid
Concentration	1 mg/ml
Purification	The antibody was affinity-purified from rabbit antiserum by affinity-chromatography using epitope-specific immunogen and the purity is > 95% (by SDS-PAGE).
Suggested Dilutions	IHC: 1:50-1:200

## Anti-Integrator complex subunit 2 INTS2 Antibody (A15434) Images

---



Immunohistochemistry (IHC) analyzes of INTS2 polyclonal antibody in paraffin-embedded human liver cancer tissue at 1:50.

---

### Submit a product review to Biocompare.com

Submit a review of this product to Biocompare.com to receive a \$20 Amazon.com giftcard! Your reviews help your fellow scientists make the right decisions. Thank you for your contribution.



Anti-Integrator complex subunit 2 INTS2 Antibody

For Research Use Only. Not for use in diagnostic procedures.