

Anti-SLC16A13 Antibody

Catalog Number: A15471-2

About SLC16A13

Predicted to enable monocarboxylic acid transmembrane transporter activity. Predicted to be involved in monocarboxylic acid transport and transmembrane transport. Located in Golgi apparatus and cytosol.

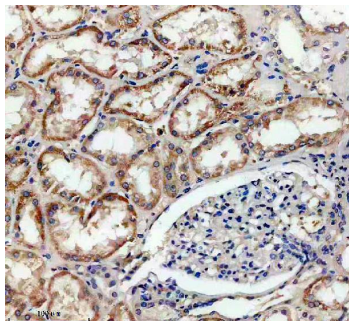
Overview

Product Name	Anti-SLC16A13 Antibody
Reactive Species	Human
Description	Boster Bio Anti-SLC16A13 Antibody catalog # A15471-2. Tested in IHC applications. This antibody reacts with Human.
Application	IHC
Clonality	Polyclonal
Formulation	Each vial contains 4 mg Trehalose, 0.9 mg NaCl, 0.2 mg Na ₂ HPO ₄ .
Storage Instructions	At -20°C for one year from date of receipt. After reconstitution, at 4°C for one month. It can also be aliquotted and stored frozen at -20°C for six months. Avoid repeated freezing and thawing.
Host	Rabbit
Uniprot ID	Q7RTY0

Technical Details

Immunogen	A synthetic peptide corresponding to a sequence in the middle region of human SLC16A13.
Form	Lyophilized
Concentration	Adding 0.2 ml of distilled water will yield a concentration of 500 ug/ml.
Purification	Immunogen affinity purified.
Suggested Dilutions	Immunohistochemistry(Paraffin-embedded Section), 2-5 ug/ml, Human

Anti-SLC16A13 Antibody (A15471-2) Images



IHC analysis of SLC16A13 using anti-SLC16A13 antibody (A15471-2). SLC16A13 was detected in a paraffin-embedded section of human kidney tissue. Heat mediated antigen retrieval was performed in EDTA buffer (pH 8.0, epitope retrieval solution). The tissue section was blocked with 10% goat serum. The tissue section was then incubated with 2 ug/ml rabbit anti-SLC16A13 Antibody (A15471-2) overnight at 4°C. Peroxidase Conjugated Goat Anti-rabbit IgG was used as secondary antibody and incubated for 30 minutes at 37°C. The tissue section was developed using HRP Conjugated Rabbit IgG Super Vision Assay Kit (Catalog # SV0002) with DAB as the chromogen.

Submit a product review to Biocompare.com

Submit a review of this product to Biocompare.com to receive a \$20 Amazon.com giftcard! Your reviews help your fellow scientists make the right decisions. Thank you for your contribution.



Anti-SLC16A13 Antibody

For Research Use Only. Not for use in diagnostic procedures.