

Anti-GLIPR1-like protein 2 GLIPR1L2 Antibody

Catalog Number: A15598

About GLIPR1L2

The GLIPR1-like 2 protein (GLIPR1L2) gene is part of a p53 target gene cluster that includes the related proteins GLIPR1 and GLIPR1L2 (2). GLIPR1L2 is similar to both the pathogenesis-related protein (PR) superfamily and the cysteine-rich secretory protein (CRISP) family (1). GLIPR1 is a tumor suppressor whose expression is regulated by p53 (3). Deletions of the GLIPR1/GLIPR1L1/GLIPR1L2 gene cluster have been observed in some multiple myeloma samples, suggesting that these proteins may also be involved in the pathogenesis of multiple myeloma (4).

Overview

Product Name	Anti-GLIPR1-like protein 2 GLIPR1L2 Antibody
Reactive Species	Human
Description	Boster Bio Anti-GLIPR1-like protein 2 GLIPR1L2 Antibody (Catalog # A15598). Tested in ELISA, WB, IHC-P, IF applications. This antibody reacts with Human.
Application	ELISA, IF, IHC-P, WB
Clonality	Polyclonal
Formulation	GLIPR1L2 antibody is supplied in PBS containing 0.02% sodium azide.
Storage Instructions	GLIPR1L2 antibody can be stored at 4°C for three months and -20°C, stable for up to one year.
Host	Rabbit
Uniprot ID	Q4G1C9

Technical Details

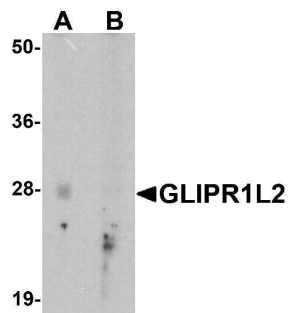
Immunogen	GLIPR1L2 antibody was raised against an 15 amino acid peptide near the center of human GLIPR1L2. The immunogen is located within amino acids 120 - 170 of GLIPR1L2.
Predicted Reactive Species	Mouse
Cross Reactivity	GLIPR1L2 antibody is human specific. At least two isoforms of GLIPR1L2 are known to exist; this antibody will detect both isoforms. This antibody is predicted to not cross-react with other GLIPR or GLIPR-like proteins.
Isotype	IgG
Form	Liquid
Concentration	1 mg/mL
Purification	GLIPR1L2 antibody is affinity chromatography purified via peptide column.

Suggested Dilutions

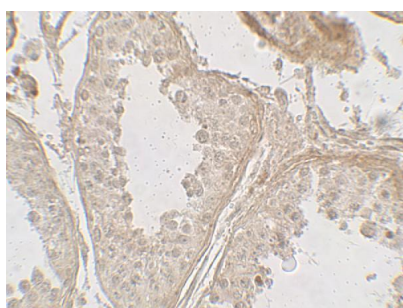
GLIPR1L2 antibody can be used for detection of GLIPR1L2 by Western blot at 1 - 2 ug/ml. Antibody can also be used for Immunohistochemistry starting at 5 ug/mL. For immunofluorescence start at 20 ug/mL.

Antibody validated: Western Blot in human samples; Immunohistochemistry in human samples and Immunofluorescence in human samples. All other applications and species not yet tested. Optimal dilutions for each application should be determined by the researcher.

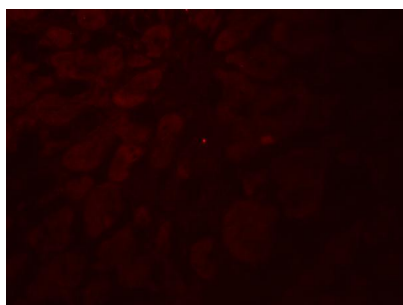
Anti-GLIPR1-like protein 2 GLIPR1L2 Antibody (A15598) Images



Western blot analysis of GLIPR1L2 in human testis tissue lysate with GLIPR1L2 antibody at 1 ug/ml in (A) the absence and (B) the presence of blocking peptide.



Immunohistochemistry of GLIPR1L2 in human testis tissue with GLIPR1L2 antibody at 5 ug/mL.



Immunofluorescence of GLIPR1L2 in human testis tissue with GLIPR1L2 antibody at 20 ug/mL.

Submit a product review to Biocompare.com

Submit a review of this product to Biocompare.com to receive a \$20 Amazon.com giftcard! Your reviews help your fellow scientists make the right decisions. Thank you for your contribution.



Anti-GLIPR1-like protein 2 GLIPR1L2 Antibody

For Research Use Only. Not for use in diagnostic procedures.