

Anti-GRAMD1A Antibody Picoband®

Catalog Number: A15650

About GRAMD1A

Predicted to enable cholesterol binding activity and cholesterol transfer activity. Predicted to be involved in cellular response to cholesterol and intracellular sterol transport. Located in several cellular components, including cytosol; endoplasmic reticulum membrane; and organelle membrane contact site.

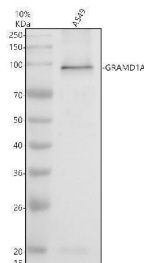
Overview

Product Name	Anti-GRAMD1A Antibody Picoband®
Reactive Species	Human
Description	Boster Bio Anti-GRAMD1A Antibody Picoband® catalog # A15650. Tested in WB, ELISA applications. This antibody reacts with Human. The brand Picoband indicates this is a premium antibody that guarantees superior quality, high affinity, and strong signals with minimal background in Western blot applications. Only our best-performing antibodies are designated as Picoband, ensuring unmatched performance.
Application	ELISA, WB
Clonality	Polyclonal
Formulation	Each vial contains 4 mg Trehalose, 0.9 mg NaCl, 0.2 mg Na ₂ HPO ₄ .
Storage Instructions	At -20°C for one year from date of receipt. After reconstitution, at 4°C for one month. It can also be aliquotted and stored frozen at -20°C for six months. Avoid repeated freezing and thawing.
Host	Rabbit
Uniprot ID	Q96CP6

Technical Details

Immunogen	E.coli-derived human GRAMD1A recombinant protein (Position: E293-S724).
Form	Lyophilized
Concentration	Adding 0.2 ml of distilled water will yield a concentration of 500 ug/ml.
Purification	Immunogen affinity purified.
Suggested Dilutions	Western blot, 0.25-0.5 ug/ml, Human ELISA, 0.1-0.5 ug/ml

Anti-GRAMD1A Antibody Picoband® (A15650) Images



Western blot analysis of GRAMD1A using anti-GRAMD1A antibody (A15650). Electrophoresis was performed on a 10% SDS-PAGE gel at 80V (Stacking gel) / 120V (Resolving gel) for 2 hours. The sample well of each lane was loaded with 30 ug of sample under reducing conditions. Lane 1: human A549 whole cell lysates. After electrophoresis, proteins were transferred to a nitrocellulose membrane at 150 mA for 50-90 minutes. Blocked the membrane with 5% non-fat milk/TBS for 1.5 hour at RT. The membrane was incubated with rabbit anti-GRAMD1A antigen affinity purified polyclonal antibody (A15650) at 0.5 ug/mL overnight at 4°C, then washed with TBS-0.1% Tween 3 times with 5 minutes each and probed with a goat anti-rabbit IgG-HRP secondary antibody at a dilution of 1:5000 for 1.5 hour at RT. The signal is developed using an ECL Plus Western Blotting Substrate (Catalog # AR1196-200) with Tanon 5200 system. A specific band was detected for GRAMD1A at approximately 95 kDa. The expected band size for GRAMD1A is at 95 kDa.

Submit a product review to Biocompare.com

Submit a review of this product to Biocompare.com to receive a \$20 Amazon.com giftcard! Your reviews help your fellow scientists make the right decisions. Thank you for your contribution.



Anti-GRAMD1A Antibody

For Research Use Only. Not for use in diagnostic procedures.