

Anti-LRRC19 Antibody

Catalog Number: A15663

About LRRC19

LRRC19 is a member of the extracellular leucine-rich repeat superfamily, a family of proteins that are thought to have diverse functions such as cell adhesion, signaling, and innate immunity. LRRC19 is closely related to the Toll-like receptors (TLRs), especially TLR3. LRRC19 does not contain a cytoplasmic Toll/IL-1 receptor (TIR) domain, but can activate NF-kappaB and induce the production of proinflammatory cytokines after stimulation with the TLR3 and other TLR ligands, suggesting that LRRC19 may play a role in the recognition and the response to certain pathogenic microorganisms. LRRC19 has also been suggested to be a potential biomarker for pancreatic tumor sensitivity to the anti-cancer, small molecule Src inhibitor AZD0530.

Overview

Product Name	Anti-LRRC19 Antibody
Reactive Species	Human, Mouse
Description	Boster Bio Anti-LRRC19 Antibody (Catalog # A15663). Tested in ELISA, WB, ICC, IF applications. This antibody reacts with Human, Mouse.
Application	ELISA, IF, ICC, WB
Clonality	Polyclonal
Formulation	LRRC19 Antibody is supplied in PBS containing 0.02% sodium azide.
Storage Instructions	LRRC19 antibody can be stored at 4°C for three months and -20°C, stable for up to one year. Avoid repeated freeze-thaw cycles. Antibodies should not be exposed to prolonged high temperatures.
Host	Rabbit
Uniprot ID	Q9H756

Technical Details

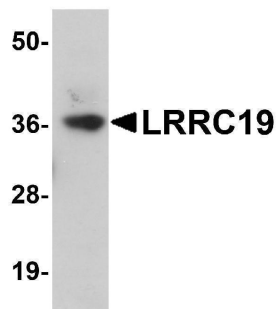
Immunogen	LRRC19 antibody was raised against a 17 amino acid synthetic peptide near the carboxy terminus of human LRRC19. The immunogen is located within amino acids 290 - 340 of LRRC19.
Predicted Reactive Species	Mouse
Isotype	IgG
Form	Liquid
Concentration	1 mg/mL
Purification	LRRC19 Antibody is affinity chromatography purified via peptide column.

Suggested Dilutions

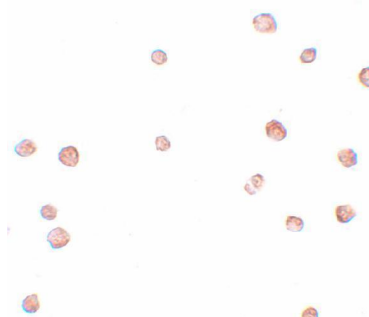
LRRC19 antibody can be used for detection of LRRC19 by Western blot at 1 ug/mL. Antibody can also be used for immunocytochemistry starting at 2.5 ug/mL. For immunofluorescence start at 20 ug/mL.

Antibody validated: Western Blot in human samples and Immunocytochemistry in human samples. All other applications and species not yet tested. Optimal dilutions for each application should be determined by the researcher.

Anti-LRRC19 Antibody (A15663) Images



Western blot analysis of LRRC19 in K562 cell lysate with LRRC19 antibody at 1 ug/mL.



Immunocytochemistry of LRCC19 in K562 cells with LRCC19 antibody at 2.5 ug/mL.

Submit a product review to [Biocompare.com](https://www.biocompare.com)

Submit a review of this product to [Biocompare.com](https://www.biocompare.com) to receive a \$20 Amazon.com giftcard! Your reviews help your fellow scientists make the right decisions. Thank you for your contribution.



Anti-LRRC19 Antibody

For Research Use Only. Not for use in diagnostic procedures.