

Anti-Forkhead box protein D4-like 1 FoxD4L1 Antibody

Catalog Number: A15665

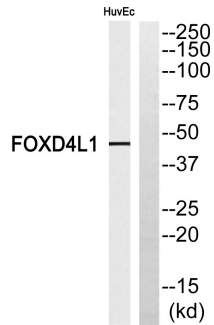
Overview

Product Name	Anti-Forkhead box protein D4-like 1 FoxD4L1 Antibody
Reactive Species	Human
Description	Boster Bio Anti-Forkhead box protein D4-like 1 FoxD4L1 Antibody catalog # A15665. Tested in WB, ELISA applications. This antibody reacts with Human.
Application	ELISA, WB
Clonality	Polyclonal
Formulation	Liquid in PBS containing 50% glycerol, 0.5% stabilizing protein and 0.02% sodium azide. This antibody is supplied in a stabilized formulation. Compatibility with conjugation reactions depends on the chemistry of the conjugation method used. For conjugation methods that are not compatible with the stabilizing components present in this formulation, a carrier-free antibody format is required.
Storage Instructions	Store at -20°C for one year. For short term storage and frequent use, store at 4°C for up to one month. Avoid repeated freeze-thaw cycles.
Host	Rabbit
Uniprot ID	Q9NU39

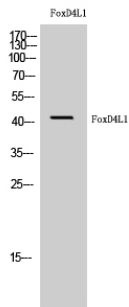
Technical Details

Immunogen	Synthesized peptide derived from FoxD4L1 . at AA range: 320-400
Isotype	IgG
Form	Liquid
Concentration	1 mg/ml
Purification	Immunogen affinity purified
Suggested Dilutions	WB 1:500-1:2000 ELISA 1:40000

Anti-Forkhead box protein D4-like 1 FoxD4L1 Antibody (A15665) Images



Western blot analysis of FOXD4L1 Antibody. The lane on the right is blocked with the FOXD4L1 peptide.



Western Blot analysis of HuvEc cells using FoxD4L1 Polyclonal Antibody cells nucleus extracted by Minute TM Cytoplasmic and Nuclear Fractionation kit .

Submit a product review to [Biocompare.com](https://www.biocompare.com)

Submit a review of this product to [Biocompare.com](https://www.biocompare.com) to receive a \$20 Amazon.com giftcard! Your reviews help your fellow scientists make the right decisions. Thank you for your contribution.



Anti-Forkhead box protein D4-like 1 FoxD4L1 Antibody

For Research Use Only. Not for use in diagnostic procedures.