

Anti-BIVM Antibody

Catalog Number: A15680

About BIVM

BIVM (for basic, immunoglobulin-like variable motif-containing) refers to a recently identified gene product that maps to human chromosome 13q32-q33 and is predicted to encode a 503-amino acid protein. BIVM shows ubiquitous expression in normal human tissue and the presence of a 5' CpG island suggests it is a housekeeping gene. BIVM is likely essential for some aspect of basic cellular function. BIVM is highly charged and localizes to the cytoplasm and nucleus where it may bind to either DNA or RNA or associate with other cellular proteins. Significant sequence homology exists with many organisms.

Overview

Product Name	Anti-BIVM Antibody
Reactive Species	Human
Description	Boster Bio Anti-BIVM Antibody (Catalog # A15680). Tested in ELISA, WB applications. This antibody reacts with Human.
Application	ELISA, WB
Clonality	Polyclonal
Formulation	0.02 M Potassium Phosphate, 0.15 M Sodium Chloride, pH 7.2, 0.01% (w/v) Sodium Azide
Storage Instructions	Store vial at -20°C prior to opening. Aliquot contents and freeze at -20°C or below for extended storage. Avoid cycles of freezing and thawing. Centrifuge product if not completely clear after standing at room temperature. This product is stable for several weeks at 4°C as an undiluted liquid. Dilute only prior to immediate use. Expiration date is one (1) year from date of opening. (Ship on dry ice.)
Host	Rabbit
Uniprot ID	Q86UB2

Technical Details

Immunogen	BIVM peptide corresponding to a region near carboxy terminus of the human protein conjugated to Keyhole Limpet Hemocyanin (KLH).
Predicted Reactive Species	Bovine, Equine, Guinea Pig
Isotype	Antiserum
Form	Liquid (sterile filtered)
Concentration	90 mg/mL by Refractometry
Purification	This product was prepared from monospecific antiserum by delipidation and defibrination. This

polyclonal antibody reacts with BIVM. This conserved protein is present in many tissues and organisms and therefore cross-reactivity with BIVM from other sources is likely but has not been determined.

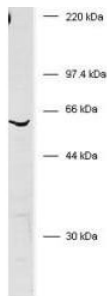
Suggested Dilutions

ELISA: 1:5,000 - 1:25,000

WB: 1:1,000

This polyclonal antibody reacts human BIVM at the C-terminal region and is useful for detection of BIVM by ELISA or western blotting. For immunoblotting a 57 kDa band corresponding to human BIVM is detected. Unstimulated HeLa cells can be used as a positive control. Although not tested, this antibody is likely functional in immunohistochemistry and immunoprecipitation.

Anti-BIVM Antibody (A15680) Images



Western blot of anti-human BIVM. Whole cell HeLa lysate was used to probe for endogenous BIVM using Rabbit-anti-Human BIVM (C-terminal specific) polyclonal antibody. A 57 kDa band corresponding to human BIVM protein is detected using a 1:1,000 dilution of the antiserum incubated for 1 hour at room temperature. Washes with 1% Tween-20 TBS preceded reaction with HRP Gt-a-Rabbit IgG (H&L) code 611-103-122 diluted 1:10,000 and incubated for 1 hour at room temperature. The blot was developed using a chemiluminescent detection method (AP ECL 60 sec followed by a 45 sec exposure). Other detection methods will yield similar results.

Submit a product review to Biocompare.com

Submit a review of this product to Biocompare.com to receive a \$20 Amazon.com giftcard! Your reviews help your fellow scientists make the right decisions. Thank you for your contribution.



Anti-BIVM Antibody

For Research Use Only. Not for use in diagnostic procedures.