

Anti-CLPH CABS1 Antibody

Catalog Number: A15713

About CABS1

CLPH (Casein-Like phosphoprotein) is a recently discovered, evolutionarily conserved, testis-specific cytoplasmic protein expressed exclusively in postmeiotic germ cells in rat spermatogenesis. CLPH is a novel casein kinase 2-phosphorylated disordered and calcium-binding protein that displays strong variation in relative expression levels during spermatogenesis. It is frequently associated with the mitochondrial inner membrane during the last steps of spermatid differentiation and is involved in the extremely complex structural rearrangements occurring in haploid germ cells during spermiogenesis.

Overview

Product Name	Anti-CLPH CABS1 Antibody
Reactive Species	Human, Rat
Description	Boster Bio Anti-CLPH CABS1 Antibody (Catalog # A15713). Tested in ELISA, WB, IHC-P applications. This antibody reacts with Human, Rat.
Application	ELISA, IHC-P, WB
Clonality	Polyclonal Clone: SK7
Formulation	CLPH Antibody is supplied in PBS containing 0.02% sodium azide.
Storage Instructions	CLPH antibody can be stored at 4°C for three months and -20°C, stable for up to one year. Avoid repeated freeze-thaw cycles. Antibodies should not be exposed to prolonged high temperatures.
Host	Rabbit
Uniprot ID	Q96KC9

Technical Details

Immunogen	CLPH antibody was raised against a 15 amino acid synthetic peptide from near the carboxy terminus of human CLPH. The immunogen is located within the last 50 amino acids of CLPH.
Predicted Reactive Species	Bovine, Mouse
Cross Reactivity	At least two alternatively spliced transcript variants have been observed.
Isotype	IgG
Form	Liquid
Concentration	1 mg/mL
Purification	CLPH Antibody is affinity chromatography purified via peptide column.

Suggested Dilutions

Dilute the sample so that the expected range of concentrations fall within the detection range of this kit.

If the expected range of concentration is unknown, a pilot test should be conducted to decide the optimal dilution ratio for your samples.

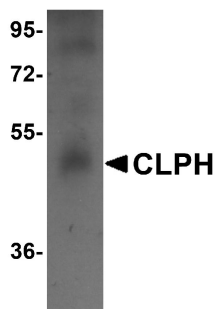
Some PubMed article(s) citing the expression level of this target are as follows:

Boster Bio's internal QC testing used:

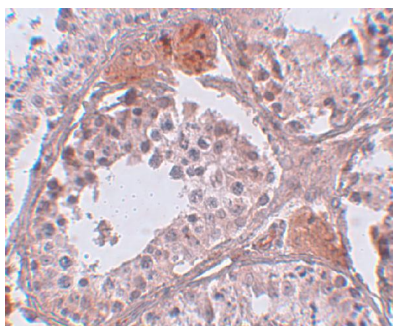
CLPH antibody can be used for detection of CLPH by Western blot at 1 ug/mL. Antibody can also be used for immunohistochemistry starting at 5 ug/mL.

Antibody validated: Western Blot in human samples and Immunohistochemistry in human samples. All other applications and species not yet tested. Optimal dilutions for each application should be determined by the researcher.

Anti-CLPH CABS1 Antibody (A15713) Images



Western blot analysis of CLPH in human testis tissue lysate with CLPH antibody at 1 ug/mL.



Immunohistochemistry of CLPH in human testis tissue with CLPH antibody at 5 ug/mL.

Submit a product review to Biocompare.com

Submit a review of this product to Biocompare.com to receive a \$20 Amazon.com giftcard! Your reviews help your fellow scientists make the right decisions. Thank you for your contribution.



Anti-CLPH CABS1 Antibody