

Anti-TCR beta Antibody

Catalog Number: A15765

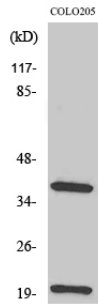
Overview

Product Name	Anti-TCR beta Antibody
Reactive Species	Human
Description	Boster Bio Anti-TCR beta Antibody catalog # A15765. Tested in WB, ELISA applications. This antibody reacts with Human.
Application	ELISA, WB
Clonality	Polyclonal
Formulation	Liquid in PBS containing 50% glycerol, 0.5% stabilizing protein and 0.02% sodium azide. This antibody is supplied in a stabilized formulation. Compatibility with conjugation reactions depends on the chemistry of the conjugation method used. For conjugation methods that are not compatible with the stabilizing components present in this formulation, a carrier-free antibody format is required.
Storage Instructions	Store at -20°C for one year. For short term storage and frequent use, store at 4°C for up to one month. Avoid repeated freeze-thaw cycles.
Host	Rabbit
Uniprot ID	P01850

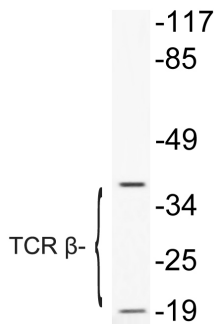
Technical Details

Immunogen	The antiserum was produced against synthesized peptide derived from human TCR beta. AA range:66-115
Isotype	IgG
Form	Liquid
Concentration	1 mg/ml
Purification	The antibody was affinity-purified from rabbit antiserum by affinity-chromatography using a epitope-specific immunogen.
Suggested Dilutions	WB 1:500-1:2000 ELISA 1:10000

Anti-TCR beta Antibody (A15765) Images



Western Blot analysis of various cells using TCR beta Polyclonal Antibody



Western blot analysis of lysate from COLO205 cells treated with Forskolin, using TCR beta antibody.

Submit a product review to Biocompare.com

Submit a review of this product to Biocompare.com to receive a \$20 Amazon.com giftcard! Your reviews help your fellow scientists make the right decisions. Thank you for your contribution.



Anti-TCR beta Antibody

For Research Use Only. Not for use in diagnostic procedures.