

Anti-SUSD1 Antibody

Catalog Number: A15778

About SUSD1

Sushi domain-containing protein 1 (SUSD1) contains a number of Complement control protein (CCP) modules, or short consensus repeats (SCR), also known as Sushi domains. These domains are known to exist in a wide variety of complement and adhesion proteins, suggesting that this protein may play a role in complement system of the immune system.

Overview

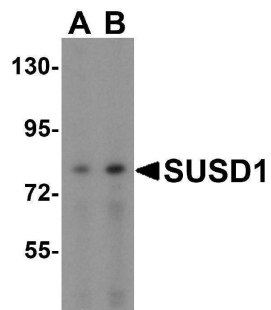
| | |
|----------------------|--|
| Product Name | Anti-SUSD1 Antibody |
| Reactive Species | Human |
| Description | Boster Bio Anti-SUSD1 Antibody (Catalog # A15778). Tested in ELISA, WB applications. This antibody reacts with Human. |
| Application | ELISA, WB |
| Clonality | Polyclonal |
| Formulation | SUSD1 Antibody is supplied in PBS containing 0.02% sodium azide. |
| Storage Instructions | SUSD1 antibody can be stored at 4°C for three months and -20°C, stable for up to one year. Avoid repeated freeze-thaw cycles. Antibodies should not be exposed to prolonged high temperatures. |
| Host | Rabbit |
| Uniprot ID | Q6UWL2 |

Technical Details

| | |
|----------------------------|--|
| Immunogen | SUSD1 antibody was raised against a peptide corresponding to 14 amino acids near the amino terminus of human SUSD1. |
| Predicted Reactive Species | Bovine |
| Cross Reactivity | SUSD1 Antibody is predicted to not cross-react with other SUSDfamily members. |
| Isotype | IgG |
| Form | Liquid |
| Concentration | 1 mg/mL |
| Purification | SUSD1 Antibody is affinity chromatography purified via peptide column. |
| Suggested Dilutions | SUSD1 antibody can be used for Western blot at 1 - 2 ug/mL. Antibody validated: Western Blot in human samples. All other applications and species not yet |

tested. Optimal dilutions for each application should be determined by the researcher.

Anti-SUSD1 Antibody (A15778) Images



Western blot analysis of SUSD1 in 293 cell lysate with SUSD1 antibody at (A) 0.5 and (B) 1 ug/mL.

Submit a product review to Biocompare.com

Submit a review of this product to Biocompare.com to receive a \$20 Amazon.com giftcard! Your reviews help your fellow scientists make the right decisions. Thank you for your contribution.



Anti-SUSD1 Antibody

For Research Use Only. Not for use in diagnostic procedures.