

Anti-OR4KF OR4K15 Antibody

Catalog Number: A15818

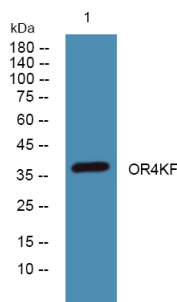
Overview

Product Name	Anti-OR4KF OR4K15 Antibody
Reactive Species	Human
Description	Boster Bio Anti-OR4KF OR4K15 Antibody catalog # A15818. Tested in WB, ELISA applications. This antibody reacts with Human.
Application	ELISA, WB
Clonality	Polyclonal
Formulation	Liquid form in PBS containing 50% glycerol, and 0.02% sodium azide.
Storage Instructions	Store at -20°C for one year. For short term storage and frequent use, store at 4°C for up to one month. Avoid repeated freeze-thaw cycles.
Host	Rabbit
Uniprot ID	Q8NH41

Technical Details

Immunogen	Synthesized peptide derived from human protein at AA range: 50-130
Isotype	IgG
Form	Liquid
Concentration	1 mg/ml
Purification	OR4KF antibody was affinity-purified from rabbit antiserum by affinity-chromatography using epitope-specific immunogen.
Suggested Dilutions	WB 1:500-2000 ELISA 1:5000-20000

Anti-OR4KF OR4K15 Antibody (A15818) Images



Western blot analysis of lysates from PC12 cells, primary antibody was diluted at 1:1000, 4°over night

Submit a product review to Biocompare.com

Submit a review of this product to Biocompare.com to receive a \$20 Amazon.com giftcard! Your reviews help your fellow scientists make the right decisions. Thank you for your contribution.



Anti-OR4KF OR4K15 Antibody

For Research Use Only. Not for use in diagnostic procedures.