

Anti-Storkhead-box protein 2 STOX2 Antibody

Catalog Number: A16012

About STOX2

The Storkhead box protein 2 (STOX2) is the only known paralog to STOX1, a winged-helix domain containing transcription factor believed to play a role in the differentiation of stem cells. STOX2 has been suggested to be part of a molecular profile unique to stem cells, and its mRNA may be part of a transcriptional profile observed with increased inflammatory response to air pollutants. Decreased STOX2 expression levels in decidua are also correlated with preeclampsia, suggesting STOX2 may play a role in the pathophysiology of preeclampsia.

Overview

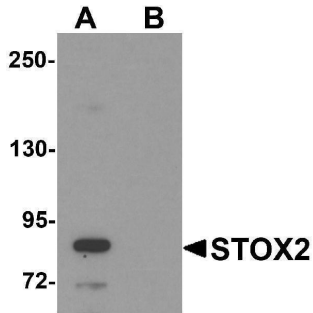
Product Name	Anti-Storkhead-box protein 2 STOX2 Antibody
Reactive Species	Human, Mouse, Rat
Description	Boster Bio Anti-Storkhead-box protein 2 STOX2 Antibody (Catalog # A16012). Tested in ELISA, WB, IHC-P, IF applications. This antibody reacts with Human, Mouse, Rat.
Application	ELISA, IF, IHC-P, WB
Clonality	Polyclonal
Formulation	STOX2 Antibody is supplied in PBS containing 0.02% sodium azide.
Storage Instructions	STOX2 antibody can be stored at 4°C for three months and -20°C, stable for up to one year. Avoid repeated freeze-thaw cycles. Antibodies should not be exposed to prolonged high temperatures.
Host	Rabbit
Uniprot ID	Q9P2F5

Technical Details

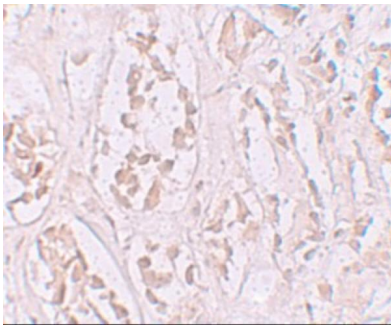
Immunogen	STOX2 antibody was raised against a 19 amino acid synthetic peptide near the carboxy terminus of human STOX2. The immunogen is located within the last 50 amino acids of STOX2.
Predicted Reactive Species	Mouse
Isotype	IgG
Form	Liquid
Concentration	1 mg/mL
Purification	STOX2 Antibody is affinity chromatography purified via peptide column.
Suggested Dilutions	STOX2 antibody can be used for detection of STOX2 by Western blot at 1 ug/mL. Antibody can also be used for immunohistochemistry starting at 2.5 ug/mL. For immunofluorescence start at 20 ug/mL. Antibody validated: Western Blot in human samples; Immunohistochemistry in human samples and

Immunofluorescence in human samples. All other applications and species not yet tested. Optimal dilutions for each application should be determined by the researcher.

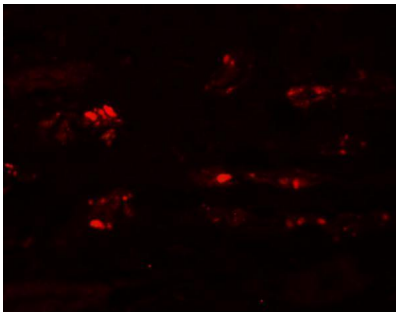
Anti-Storkhead-box protein 2 STOX2 Antibody (A16012) Images



Western blot analysis of STOX2 in human kidney tissue lysate with STOX2 antibody at 1 ug/mL in (A) the absence and (B) the presence of blocking peptide.



Immunohistochemistry of STOX2 in human kidney tissue with STOX2 antibody at 2.5 ug/mL.



Immunofluorescence of STOX2 in human kidney tissue with STOX2 antibody at 20 ug/mL.

Submit a product review to [Biocompare.com](https://www.biocompare.com)

Submit a review of this product to [Biocompare.com](https://www.biocompare.com) to receive a \$20 Amazon.com giftcard! Your reviews help your fellow scientists make the right decisions. Thank you for your contribution.



Anti-Storkhead-box protein 2 STOX2 Antibody

For Research Use Only. Not for use in diagnostic procedures.