

Anti-Epsilon Tubulin Monoclonal Antibody

Catalog Number: A16034

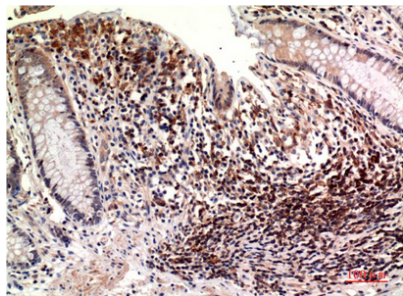
Overview

Product Name	Anti-Epsilon Tubulin Monoclonal Antibody
Reactive Species	Human, Mouse, Rat
Description	Boster Bio Anti-Epsilon Tubulin Monoclonal Antibody catalog # A16034. Tested in IHC, IF applications. This antibody reacts with Human, Mouse, Rat.
Application	IF, IHC
Clonality	Monoclonal 3C1
Formulation	Liquid in PBS containing 50% glycerol, 0.5% stabilizing protein and 0.02% sodium azide. This antibody is supplied in a stabilized formulation. Compatibility with conjugation reactions depends on the chemistry of the conjugation method used. For conjugation methods that are not compatible with the stabilizing components present in this formulation, a carrier-free antibody format is required.
Storage Instructions	Store at -20°C for one year. For short term storage and frequent use, store at 4°C for up to one month. Avoid repeated freeze-thaw cycles.
Host	Mouse
Uniprot ID	Q9UJT0

Technical Details

Immunogen	Synthetic Peptide of Epsilon Tubulin
Isotype	IgG1
Form	Liquid
Concentration	1 mg/ml
Purification	Protein A purified
Suggested Dilutions	IHC 1:100-200 IF 1:50-200

Anti-Epsilon Tubulin Monoclonal Antibody (A16034) Images



Immunohistochemical analysis of paraffin-embedded Human Colon Carcinoma Tissue using Epsilon Tubulin Mouse mAb diluted at 1:200.

Submit a product review to [Biocompare.com](https://www.biocompare.com)

Submit a review of this product to [Biocompare.com](https://www.biocompare.com) to receive a \$20 Amazon.com giftcard! Your reviews help your fellow scientists make the right decisions. Thank you for your contribution.



Anti-Epsilon Tubulin Monoclonal Antibody

For Research Use Only. Not for use in diagnostic procedures.