

Anti-TTC39A Antibody Picoband®

Catalog Number: A16108

About TTC39A

TTC39A (Tetratricopeptide Repeat Domain 39A) is located on human chromosome 5p13.3. The TTC39A protein is ubiquitously expressed in brain, colon and other tissues. The TTC39A (also known as DEME-6; C1orf34) gene is conserved in chimpanzee, Rhesus monkey, dog, cow, mouse, rat, chicken, zebrafish, and frog. 232 organisms have orthologs with human gene TTC39A. An important paralog of this gene is TTC39B.

Overview

Product Name	Anti-TTC39A Antibody Picoband®
Reactive Species	Human
Description	Boster Bio Anti-TTC39A Antibody Picoband® catalog # A16108. Tested in ELISA, WB, Flow Cytometry applications. This antibody reacts with Human. The brand Picoband indicates this is a premium antibody that guarantees superior quality, high affinity, and strong signals with minimal background in Western blot applications. Only our best-performing antibodies are designated as Picoband, ensuring unmatched performance.
Application	ELISA, Flow Cytometry, WB
Clonality	Polyclonal
Formulation	Each vial contains 4 mg Trehalose, 0.9 mg NaCl, 0.2 mg Na ₂ HPO ₄ .
Storage Instructions	At -20°C for one year from date of receipt. After reconstitution, at 4°C for one month. It can also be aliquotted and stored frozen at -20°C for six months. Avoid repeated freezing and thawing.
Host	Rabbit
Uniprot ID	Q5SRH9

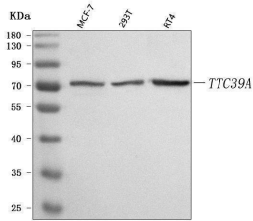
Technical Details

Immunogen	E.coli-derived human TTC39A recombinant protein (Position: E18-E489).
Recommended Detection Systems	Boster recommends Enhanced Chemiluminescent Kit with anti-Rabbit IgG (EK1002) for Western blot.
Cross Reactivity	No cross-reactivity with other proteins.
Isotype	Rabbit IgG
Form	Lyophilized
Concentration	Adding 0.2 ml of distilled water will yield a concentration of 500 µg/ml.
Purification	Immunogen affinity purified.

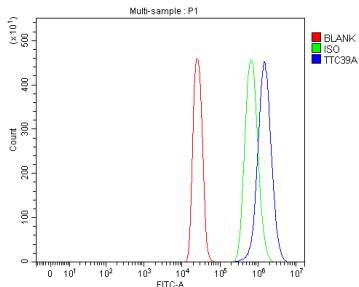
Suggested Dilutions

Western blot, 0.25-0.5 ug/ml, Human
Flow Cytometry (Fixed), 1-3 ug/ 1×10^6 cells, Human
ELISA, 0.1-0.5 ug/ml, -

Anti-TTC39A Antibody Picoband® (A16108) Images



Western blot analysis of TTC39A using anti-TTC39A antibody (A16108). Electrophoresis was performed on a 5-20% SDS-PAGE gel at 70V (Stacking gel) / 90V (Resolving gel) for 2-3 hours. The sample well of each lane was loaded with 30 ug of sample under reducing conditions. Lane 1: human MCF-7 whole cell lysates, Lane 2: human 293T whole cell lysates, Lane 3: human RT4 whole cell lysates. After electrophoresis, proteins were transferred to a nitrocellulose membrane at 150 mA for 50-90 minutes. Blocked the membrane with 5% non-fat milk/TBS for 1.5 hour at RT. The membrane was incubated with rabbit anti-TTC39A antigen affinity purified polyclonal antibody (Catalog # A16108) at 0.5 ug/mL overnight at 4°C, then washed with TBS-0.1%Tween 3 times with 5 minutes each and probed with a goat anti-rabbit IgG-HRP secondary antibody at a dilution of 1:5000 for 1.5 hour at RT. The signal is developed using an Enhanced Chemiluminescent detection (ECL) kit (Catalog # EK1002) with Tanon 5200 system. A specific band was detected for TTC39A at approximately 72 kDa. The expected band size for TTC39A is at 70 kDa.



Flow Cytometry analysis of 293T cells using anti-TTC39A antibody (A16108). Overlay histogram showing 293T cells stained with A16108 (Blue line). To facilitate intracellular staining, cells were fixed with 4% paraformaldehyde and permeabilized with permeabilization buffer. The cells were blocked with 10% normal goat serum. And then incubated with rabbit anti-TTC39A Antibody (A16108, 1 ug/1x10⁶ cells) for 30 min at 20°C. DyLight®488 conjugated goat anti-rabbit IgG (BA1127, 5-10 ug/1x10⁶ cells) was used as secondary antibody for 30 minutes at 20°C. Isotype control antibody (Green line) was rabbit IgG (1 ug/1x10⁶) used under the same conditions. Unlabelled sample (Red line) was also used as a control.

Submit a product review to Biocompare.com

Submit a review of this product to Biocompare.com to receive a \$20 Amazon.com giftcard! Your reviews help your fellow scientists make the right decisions. Thank you for your contribution.



Anti-TTC39A Antibody

For Research Use Only. Not for use in diagnostic procedures.