

## Anti-CTRP7 C1qtnf7 Antibody

Catalog Number: A16229

### About C1QTNF7

Adipose tissue of an organism plays a major role in regulating physiologic and pathologic processes such as metabolism and immunity by producing and secreting a variety of bioactive molecules termed adipokines. One highly conserved family of adipokines is adiponectin/ACRP30 and its structural and functional paralogs, the C1q/tumor necrosis factor- $\alpha$ -related proteins (CTRPs) 1-7. Unlike adiponectin, which is expressed exclusively by differentiated adipocytes, the CTRPs are expressed in a wide variety of tissues. These proteins are thought to act mainly on liver and muscle tissue to control glucose and lipid metabolism. An analysis of the crystal structure of adiponectin revealed a structural and evolutionary link between TNF and C1q-containing proteins, suggesting that these proteins arose from a common ancestral innate immunity gene. Like the other members of the adiponectin and CTRP protein family, the mature CTRP7 is secreted and can be found in the organism's circulatory system.

### Overview

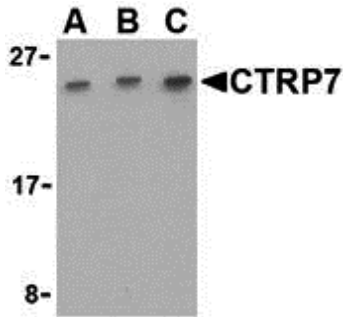
Product Name	Anti-CTRP7 C1qtnf7 Antibody
Reactive Species	Human, Mouse, Rat
Description	Boster Bio Anti-CTRP7 C1qtnf7 Antibody (Catalog # A16229). Tested in ELISA, WB, ICC, IF applications. This antibody reacts with Human, Mouse, Rat.
Application	ELISA, IF, ICC, WB
Clonality	Polyclonal
Formulation	CTRP7 Antibody is supplied in PBS containing 0.02% sodium azide.
Storage Instructions	CTRP7 antibody can be stored at 4°C for three months and -20°C, stable for up to one year. Avoid repeated freeze-thaw cycles. Antibodies should not be exposed to prolonged high temperatures.
Host	Rabbit
Uniprot ID	Q8BVD7

### Technical Details

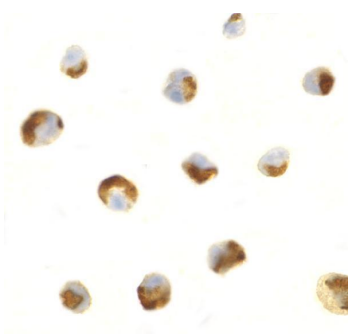
Immunogen	CTRP7 antibody was raised against a 15 amino acid synthetic peptide from near the carboxy terminus of human CTRP7. The immunogen is located within the last 50 amino acids of CTRP7.
Predicted Reactive Species	Bovine, Chicken, Guinea Pig, Rat
Cross Reactivity	These proteins are often highly modified post-translationally and migrate in SDS-PAGE at positions other than their predicted size.
Isotype	IgG
Form	Liquid

Concentration	1 mg/mL
Purification	CTRP7 Antibody is affinity chromatography purified via peptide column.
Suggested Dilutions	antibody can be used for the detection of CTRP7 by Western blot at 0.5 to 2 ug/mL. Antibody can also be used for immunocytochemistry starting at 0.5 ug/mL. For immunofluorescence start at 2 ug/mL. Antibody validated: Western Blot in human samples; Immunocytochemistry in human samples and Immunofluorescence in human samples. All other applications and species not yet tested. Optimal dilutions for each application should be determined by the researcher.

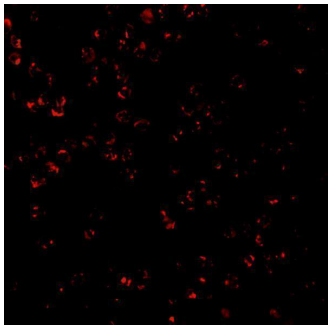
## Anti-CTRP7 C1qtnf7 Antibody (A16229) Images



Western blot analysis of CTRP7 in 293 cell lysate with CTRP7 antibody at (A) 0.5, (B) 1, and (C) 2 ug/mL.



Immunocytochemistry of CTRP7 in HL60 cells with CTRP7 antibody at 0.5 ug/mL.



Immunofluorescence of CTRP7 in HL60 with CTRP7 antibody at 2 ug/mL.

### Submit a product review to [Biocompare.com](https://www.biocompare.com)

Submit a review of this product to [Biocompare.com](https://www.biocompare.com) to receive a \$20 Amazon.com giftcard! Your reviews help your fellow scientists make the right decisions. Thank you for your contribution.



Anti-CTRP7 C1qtnf7 Antibody

For Research Use Only. Not for use in diagnostic procedures.