

## Anti-UHRF1-binding protein 1-like UHRF1BP1L Antibody

Catalog Number: A16249

### About UHRF1BP1L

The Ubiquitin-like containing PHD and RING finger domains 1-binding protein 1-like (UHRF1BP1L) is closely related to UHRF1BP1, also known as ICBP90, a transcription and cell cycle regulator that specifically binds to the histone H3 N-terminal tail. While little is known of UHRF1BP1L, UHRF1BP1 is required for proper heterochromatin formation in mammalian cells. Furthermore, UHRF1BP1 is thought to be a pivotal target for the ERK1/2 signaling pathway to control the proliferation of Jurkat T cells, suggesting that UHRF1BP1L may also be involved in chromatin regulation and cell proliferation.

### Overview

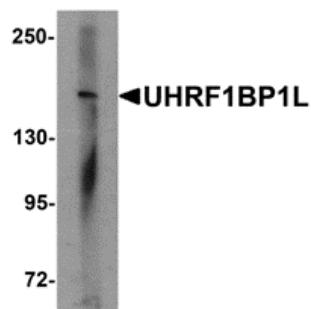
Product Name	Anti-UHRF1-binding protein 1-like UHRF1BP1L Antibody
Reactive Species	Human, Mouse
Description	Boster Bio Anti-UHRF1-binding protein 1-like UHRF1BP1L Antibody (Catalog # A16249). Tested in ELISA, WB, IHC-P, IF applications. This antibody reacts with Human, Mouse.
Application	ELISA, IF, IHC-P, WB
Clonality	Polyclonal
Formulation	UHRF1BP1L Antibody is supplied in PBS containing 0.02% sodium azide.
Storage Instructions	UHRF1BP1L antibody can be stored at 4°C for three months and -20°C, stable for up to one year. Avoid repeated freeze-thaw cycles. Antibodies should not be exposed to prolonged high temperatures.
Host	Rabbit
Uniprot ID	A0JNW5

### Technical Details

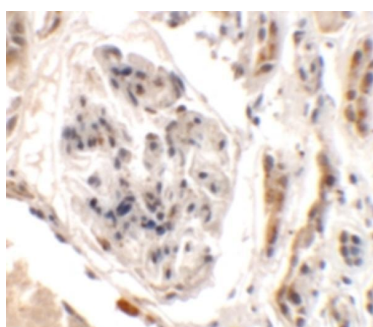
Immunogen	UHRF1BP1L antibody was raised against a 17 amino acid synthetic peptide near the center of human UHRF1BP1L. The immunogen is located within amino acids 980 - 1030 of UHRF1BP1L.
Predicted Reactive Species	Mouse
Cross Reactivity	At least two isoforms of UHRF1BP1L are known to exist; this antibody will recognize both isoforms. UHRF1BP1L antibody is predicted to not cross-react with UHRF1BP1
Isotype	IgG
Form	Liquid
Concentration	1 mg/mL

Purification	UHRF1BP1L Antibody is affinity chromatography purified via peptide column.
Suggested Dilutions	UHRF1BP1L antibody can be used for detection of UHRF1BP1L by Western blot at 1 ug/mL. Antibody can also be used for immunohistochemistry starting at 2.5 ug/mL. For immunofluorescence start at 20 ug/mL. Antibody validated: Western Blot in mouse samples; Immunohistochemistry in human samples and Immunofluorescence in human samples. All other applications and species not yet tested. Optimal dilutions for each application should be determined by the researcher.

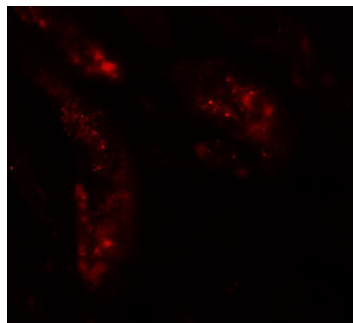
## Anti-UHRF1-binding protein 1-like UHRF1BP1L Antibody (A16249) Images



Western blot analysis of UHRF1BP1L in mouse brain tissue lysate with UHRF1BP1L antibody at 1 ug/mL



Immunohistochemistry of UHRF1BP1L in human kidney tissue with UHRF1BP1L antibody at 2.5 ug/mL.



Immunofluorescence of UHRF1BP1L in human kidney tissue with UHRF1BP1L antibody at 20 ug/mL.

### Submit a product review to [Biocompare.com](https://www.biocompare.com)

Submit a review of this product to [Biocompare.com](https://www.biocompare.com) to receive a \$20 Amazon.com giftcard! Your reviews help your fellow scientists make the right decisions. Thank you for your contribution.



Anti-UHRF1-binding protein 1-like UHRF1BP1L Antibody

For Research Use Only. Not for use in diagnostic procedures.