

Anti-Protein yippee-like 1 YPEL1 Antibody

Catalog Number: A16256

About YPEL1

YPEL1 (yippee-like 1) is thought to play a role in the epitheloid conversion of fibroblasts and the regulation of the cellular morphology. It is a 119 amino acid protein that localizes to the nucleus and belongs to a family of yippee-like proteins that include YPEL2 - 5, all of which localize to the centrosome and nucleus and are widely expressed in both adult and fetal tissue. The family of human YPEL proteins share a high degree of sequence homology with their rodent homologs, suggesting a conserved function between species. YPEL1 might be an important factor during the development and malignant transformation of tissues.

Overview

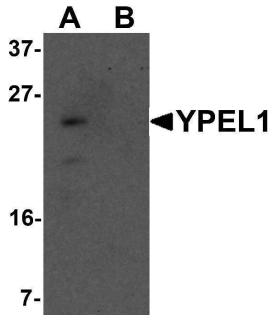
Product Name	Anti-Protein yippee-like 1 YPEL1 Antibody
Reactive Species	Human, Mouse, Rat
Description	Boster Bio Anti-Protein yippee-like 1 YPEL1 Antibody (Catalog # A16256). Tested in ELISA, WB, ICC, IF applications. This antibody reacts with Human, Mouse, Rat.
Application	ELISA, IF, ICC, WB
Clonality	Polyclonal
Formulation	YPEL1 Antibody is supplied in PBS containing 0.02% sodium azide.
Storage Instructions	YPEL1 antibody can be stored at 4°C for three months and -20°C, stable for up to one year. Avoid repeated freeze-thaw cycles. Antibodies should not be exposed to prolonged high temperatures.
Host	Rabbit
Uniprot ID	O60688

Technical Details

Immunogen	YPEL1 antibody was raised against a 11 amino acid synthetic peptide near the amino terminus of human YPEL1. The immunogen is located within the first 50 amino acids of YPEL1.
Predicted Reactive Species	Mouse
Isotype	IgG
Form	Liquid
Concentration	1 mg/mL
Purification	YPEL1 Antibody is affinity chromatography purified via peptide column.
Suggested Dilutions	YPEL1 antibody can be used for detection of YPEL1 by Western blot at 1 ug/mL. Antibody can also be used for immunocytochemistry starting at 2.5 ug/mL. For immunofluorescence start at 2.5 ug/mL.

Antibody validated: Western Blot in human samples; Immunocytochemistry in human samples and Immunofluorescence in human samples. All other applications and species not yet tested. Optimal dilutions for each application should be determined by the researcher.

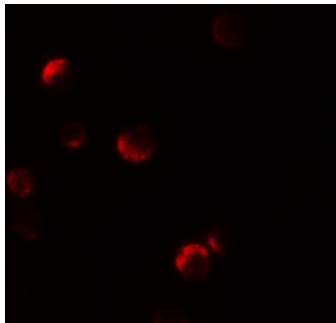
Anti-Protein yippee-like 1 YPEL1 Antibody (A16256) Images



Western blot analysis of YPEL1 in HeLa cell lysate with YPEL1 antibody at 1 ug/mL in (A) the absence and (B) the presence of blocking peptide.



Immunocytochemistry of YPEL1 in HeLa cells with YPEL1 antibody at 2.5 ug/mL.



Immunofluorescence of YPEL1 in HeLa cells with YPEL1 antibody at 20 ug/mL.

Submit a product review to [Biocompare.com](https://www.biocompare.com)

Submit a review of this product to [Biocompare.com](https://www.biocompare.com) to receive a \$20 Amazon.com giftcard! Your reviews help your fellow scientists make the right decisions. Thank you for your contribution.



Anti-Protein yippee-like 1 YPEL1 Antibody

For Research Use Only. Not for use in diagnostic procedures.