

Anti-LEMD1 Antibody

Catalog Number: A16257

About LEMD1

LEMD1 (LEM domain-containing1) is a member of cancer-testis gene family. LEMD1 is normally expressed only in testis. Six alternatively spliced forms of LEMD1 transcripts in normal testis have been identified, but only one of the six was expressed in colorectal cancers. LEMD1 may represent a promising target antigen for immunotherapy of colorectal cancers. In addition, LEMD1 and SPATA19 are putative cancer biomarkers and promising targets for active immunotherapy.

Overview

Product Name	Anti-LEMD1 Antibody
Reactive Species	Human, Mouse
Description	Boster Bio Anti-LEMD1 Antibody (Catalog # A16257). Tested in ELISA, WB applications. This antibody reacts with Human, Mouse.
Application	ELISA, WB
Clonality	Polyclonal
Formulation	LEMD1 Antibody is supplied in PBS containing 0.02% sodium azide.
Storage Instructions	LEMD1 antibody can be stored at 4°C for three months and -20°C, stable for up to one year. Avoid repeated freeze-thaw cycles. Antibodies should not be exposed to prolonged high temperatures.
Host	Rabbit
Uniprot ID	Q68G75

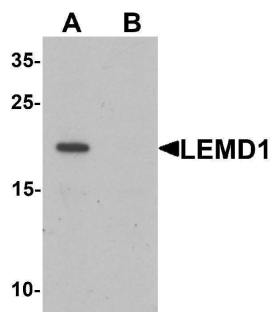
Technical Details

Immunogen	LEMD1 antibody was raised against a 19 amino acid synthetic peptide near the center of human LEMD1. The immunogen is located within amino acids 90 - 140 of LEMD1.
Predicted Reactive Species	Mouse
Cross Reactivity	At least six isoforms of LEMD1 are known to exist; this antibody will detect the longest isoform. LEMD1 antibody is predicted to not cross-react with LEMD2 and LEMD3.
Isotype	IgG
Form	Liquid
Concentration	1 mg/mL
Purification	LEMD1 Antibody is affinity chromatography purified via peptide column.

Suggested Dilutions

LEMD1 antibody can be used for detection of LEMD1 by Western blot at 1 ug/mL.
Antibody validated: Western Blot in mouse samples. All other applications and species not yet tested. Optimal dilutions for each application should be determined by the researcher.

Anti-LEMD1 Antibody (A16257) Images



Western blot analysis of LEMD1 in A20 cell lysate with LEMD1 antibody at 1 ug/mL in (A) the absence and (B) the presence of blocking peptide.

Submit a product review to Biocompare.com

Submit a review of this product to Biocompare.com to receive a \$20 Amazon.com giftcard! Your reviews help your fellow scientists make the right decisions. Thank you for your contribution.



Anti-LEMD1 Antibody

For Research Use Only. Not for use in diagnostic procedures.