

## Anti-KLHL11 Monoclonal Antibody

Catalog Number: A16260

### About KLHL11

BIVM (for basic, immunoglobulin-like variable motif-containing) refers to a recently identified gene product that maps to human chromosome 13q32-q33 and is predicted to encode a 503-amino acid protein. BIVM shows ubiquitous expression in normal human tissue and the presence of a 5' CpG island suggests it is a housekeeping gene. BIVM is likely essential for some aspect of basic cellular function. BIVM is highly charged and localizes to the cytoplasm and nucleus where it may bind to either DNA or RNA or associate with other cellular proteins. Significant sequence homology exists with many organisms.

### Overview

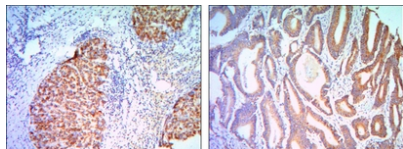
Product Name	Anti-KLHL11 Monoclonal Antibody
Reactive Species	Human
Description	Boster Bio Anti-KLHL11 Monoclonal Antibody catalog # A16260. Tested in ELISA, IF, IHC-P, WB applications. This antibody reacts with Human.
Application	ELISA, IF, IHC-P, WB
Clonality	Monoclonal 1B9C1
Formulation	Ascitic fluid containing 0.03% sodium azide.
Storage Instructions	Store at -20°C for one year. For short term storage and frequent use, store at 4°C for up to one month. Avoid repeated freeze-thaw cycles.
Host	Mouse
Uniprot ID	Q9NVR0

### Technical Details

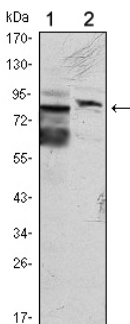
Immunogen	Purified recombinant fragment of human KLHL11 expressed in E. Coli.
Predicted Reactive Species	Bovine, Canine, Equine, Pig
Isotype	IgG
Form	Liquid
Concentration	1 mg/mL.
Purification	Ascitic fluid
Suggested Dilutions	Dilute the sample so that the expected range of concentrations fall within the detection range of this kit. If the expected range of concentration is unknown, a pilot test should be conducted to decide the

optimal dilution ratio for your samples.  
Some PubMed article(s) citing the expression level of this target are as follows:  
Boster Bio's internal QC testing used:  
WB 1:500-1:2000  
IHC 1:200-1:1000  
IF 1:200-1:1000  
ELISA 1:10000

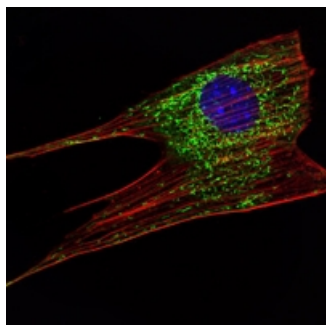
## Anti-KLHL11 Monoclonal Antibody (A16260) Images



Immunohistochemistry (IHC) analysis of paraffin-embedded liver cancer (right) and colon cancer tissues (left) with DAB staining using KLHL11 Monoclonal antibody.



Western Blot (WB) analysis using KLHL11 Monoclonal antibody against HeLa (1) and MCF-7 (2) cell lysate.



Immunofluorescence (IF) analysis of NIH/3T3 cells using KLHL11 Monoclonal antibody (green). Blue: DRAQ5 fluorescent DNA dye. Red: Actin filaments have been labeled with Alexa Fluor-555 phalloidin.

## Submit a product review to Biocompare.com

Submit a review of this product to Biocompare.com to receive a \$20 Amazon.com giftcard! Your reviews help your fellow scientists make the right decisions. Thank you for your contribution.



Anti-KLHL11 Monoclonal Antibody