

## Anti-TCTEX1D2 Antibody

Catalog Number: A16263

### About TCTEX1D2

Dyneins are multi-subunit, high molecular weight ATPases that interact with microtubules to generate force by converting the chemical energy of ATP into the mechanical energy of movement. Cytoplasmic or axonemal Dynein is an approximately 12 subunit complex of two heavy chains, two intermediate chains to anchor Dynein to its cargo, four smaller intermediate chains and several light chains. It performs functions necessary for cell survival such as organelle transport and centrosome assembly. TCTEX1 is a cytoplasmic dynein light chain found in a complex with Na<sup>+</sup> CP type X (SCN10A). TCTEX1D2, also called TCTEX1 domain containing 2, belongs to the dynein light chain TCTEX-type family. Its function is still under investigation.

### Overview

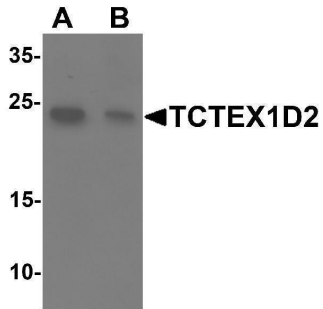
Product Name	Anti-TCTEX1D2 Antibody
Reactive Species	Human
Description	Boster Bio Anti-TCTEX1D2 Antibody (Catalog # A16263). Tested in ELISA, WB, IF applications. This antibody reacts with Human.
Application	ELISA, IF, WB
Clonality	Polyclonal
Formulation	TCTEX1D2 Antibody is supplied in PBS containing 0.02% sodium azide.
Storage Instructions	TCTEX1D2 antibody can be stored at 4°C for three months and -20°C, stable for up to one year. Avoid repeated freeze-thaw cycles. Antibodies should not be exposed to prolonged high temperatures.
Host	Rabbit
Uniprot ID	Q8WW35

### Technical Details

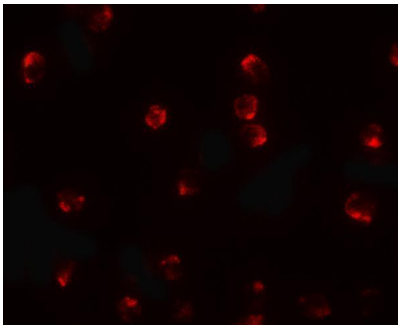
Immunogen	TCTEX1D2 antibody was raised against a 16 amino acid synthetic peptide near the amino terminus of human TCTEX1D2. The immunogen is located within the first 50 amino acids of TCTEX1D2.
Predicted Reactive Species	Bovine
Cross Reactivity	TCTEX1D2 is predicted to not cross-react with other members of the TCTEX-type family.
Isotype	IgG
Form	Liquid
Concentration	1 mg/mL

Purification	TCTEX1D2 Antibody is affinity chromatography purified via peptide column.
Suggested Dilutions	TCTEX1D2 antibody can be used for detection of TCTEX1D2 by Western blot at 1 ug/mL. For immunofluorescence start at 20 ug/mL. Antibody validated: Western Blot in human samples and Immunofluorescence in human samples. All other applications and species not yet tested. Optimal dilutions for each application should be determined by the researcher.

## Anti-TCTEX1D2 Antibody (A16263) Images



Western blot analysis of TCTEX1D2 in K562 cell lysate with TCTEX1D2 antibody at 1 ug/mL in (A) the absence and (B) the presence of blocking peptide.



Immunofluorescence of TCTEX1D2 in K562 cells with TCTEX1D2 antibody at 20 ug/mL.

### Submit a product review to [Biocompare.com](https://www.biocompare.com)

Submit a review of this product to [Biocompare.com](https://www.biocompare.com) to receive a \$20 Amazon.com giftcard! Your reviews help your fellow scientists make the right decisions. Thank you for your contribution.



Anti-TCTEX1D2 Antibody

For Research Use Only. Not for use in diagnostic procedures.