

Anti-CTRP2 C1QTNF2 Antibody

Catalog Number: A16305

About C1QTNF2

Adipose tissue of an organism plays a major role in regulating physiologic and pathologic processes such as metabolism and immunity by producing and secreting a variety of bioactive molecules termed adipokines. One highly conserved family of adipokines is adiponectin/ACRP30 and its structural and functional paralogs, the C1q/tumor necrosis factor- α -related proteins (CTRPs) 1-7. Unlike adiponectin, which is expressed exclusively by differentiated adipocytes, the CTRPs are expressed in a wide variety of tissues. These proteins are thought to act mainly on liver and muscle tissue to control glucose and lipid metabolism. An analysis of the crystal structure of adiponectin revealed a structural and evolutionary link between TNF and C1q-containing proteins, suggesting that these proteins arose from a common ancestral innate immunity gene. Of the CTRPs, CTRP2 is most similar structurally and functionally to adiponectin. Recombinant CTRP2 rapidly activated AMPK and MAPK in cultured C2C12 cells, leading to increased glycogen accumulation and fatty acid oxidation.

Overview

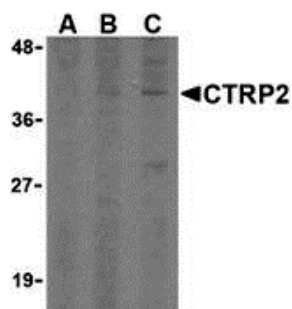
Product Name	Anti-CTRP2 C1QTNF2 Antibody
Reactive Species	Human, Mouse
Description	Boster Bio Anti-CTRP2 C1QTNF2 Antibody (Catalog # A16305). Tested in ELISA, WB, IHC-P applications. This antibody reacts with Human, Mouse.
Application	ELISA, IHC-P, WB
Clonality	Polyclonal
Formulation	CTRP2 Antibody is supplied in PBS containing 0.02% sodium azide.
Storage Instructions	CTRP2 antibody can be stored at 4°C for three months and -20°C, stable for up to one year. Avoid repeated freeze-thaw cycles. Antibodies should not be exposed to prolonged high temperatures.
Host	Rabbit
Uniprot ID	Q9BXJ5

Technical Details

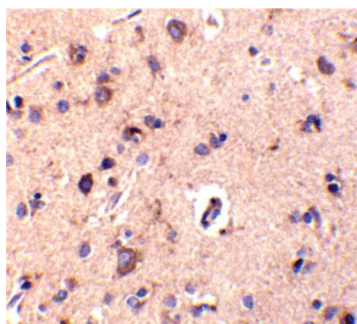
Immunogen	Rabbit CTRP2 polyclonal antibody was raised against a 16 amino acid synthetic peptide from near the center of human CTRP2. The immunogen is located within amino acids 140 - 190 of CTRP2.
Predicted Reactive Species	Pig
Cross Reactivity	These proteins are often highly modified post-translationally and migrate in SDS-PAGE at positions other than their predicted size.
Isotype	IgG
Form	Liquid

Concentration	1 mg/mL
Purification	CTRP2 Antibody is affinity chromatography purified via peptide column.
Suggested Dilutions	CTRP2 polyclonal antibody can be used for the detection of CTRP2 by Western blot at 1 - 4 ug/mL. Antibody can also be used for immunohistochemistry starting at 10 ug/mL. Antibody validated: Western Blot in mouse samples and Immunohistochemistry in human samples. All other applications and species not yet tested. Optimal dilutions for each application should be determined by the researcher.

Anti-CTRP2 C1QTNF2 Antibody (A16305) Images



Western blot analysis of CTRP2 in 3T3 (Balb) cell lysate with CTRP2 (IN) antibody at (A) 1, (B) 2, and (C) 4 ug/mL.



Immunohistochemical staining of human brain tissue using CTRP2 antibody at 10 ug/mL.

Submit a product review to [Biocompare.com](https://www.biocompare.com)

Submit a review of this product to [Biocompare.com](https://www.biocompare.com) to receive a \$20 Amazon.com giftcard! Your reviews help your fellow scientists make the right decisions. Thank you for your contribution.



Anti-CTRP2 C1QTNF2 Antibody

For Research Use Only. Not for use in diagnostic procedures.