

## Anti-IFTLD1 LMNTD1 Antibody

Catalog Number: A16307

### About IFLTD1

The intermediate filament tail domain-containing protein (IFLTD1) was initially identified as a candidate gene for pulmonary adenoma susceptibility 1 gene in mice. Transcripts of the gene were only detected in mouse lung tissue from strains carrying the Pas1-susceptible allele. Expression of different alleles of this gene in lung cancer cell lines resulted in different levels of colony formation in in vitro colony formation assays, suggesting that allelic variants of this gene can modulate growth of human cancer cells.

### Overview

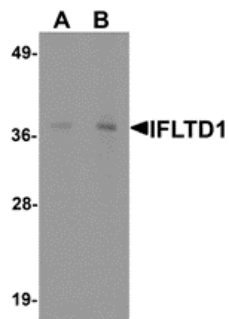
Product Name	Anti-IFTLD1 LMNTD1 Antibody
Reactive Species	Human, Mouse, Rat
Description	Boster Bio Anti-IFTLD1 LMNTD1 Antibody (Catalog # A16307). Tested in ELISA, WB, IHC-P applications. This antibody reacts with Human, Mouse, Rat.
Application	ELISA, IHC-P, WB
Clonality	Polyclonal
Formulation	IFTLD1 Antibody is supplied in PBS containing 0.02% sodium azide.
Storage Instructions	IFTLD1 antibody can be stored at 4°C for three months and -20°C, stable for up to one year. Avoid repeated freeze-thaw cycles. Antibodies should not be exposed to prolonged high temperatures.
Host	Rabbit
Uniprot ID	Q8N9Z9

### Technical Details

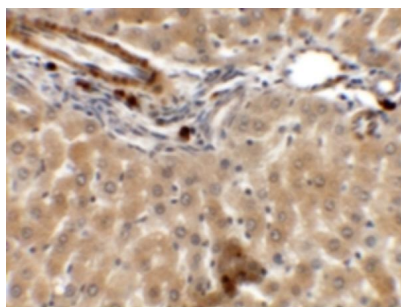
Immunogen	IFTLD1 antibody was raised against an 19 amino acid synthetic peptide near the center of human IFLTD1. The immunogen is located within amino acids 200 - 250 of IFTLD1.
Predicted Reactive Species	Pig
Cross Reactivity	At least four isoforms of IFLTD1 are known to exist; this antibody will detect all but isoform 4
Isotype	IgG
Form	Liquid
Concentration	1 mg/mL
Purification	IFTLD1 Antibody is affinity chromatography purified via peptide column.
Suggested Dilutions	IFTLD1 antibody can be used for detection of IFLTD1 by Western blot at 1 - 2 ug/mL. Antibody can

also be used for immunohistochemistry starting at 5 ug/mL.  
Antibody validated: Western Blot in rat samples and Immunohistochemistry in rat samples. All other applications and species not yet tested. Optimal dilutions for each application should be determined by the researcher.

## Anti-IFTLD1 LMNTD1 Antibody (A16307) Images



Western blot analysis of IFTLD1 in rat liver tissue lysate with IFTLD1 antibody at (A) 1 and (B) 2 ug/mL.



Immunohistochemistry of IFTLD1 in rat liver tissue with IFTLD1 antibody at 5 ug/mL.

### Submit a product review to Biocompare.com

Submit a review of this product to Biocompare.com to receive a \$20 Amazon.com giftcard! Your reviews help your fellow scientists make the right decisions. Thank you for your contribution.



Anti-IFTLD1 LMNTD1 Antibody

For Research Use Only. Not for use in diagnostic procedures.