

## Anti-NKX1-1 Antibody (Center)

Catalog Number: A16315

### About NKX1-1

The function of this protein remains unknown.

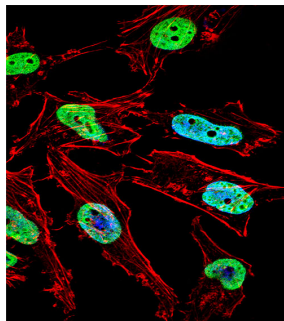
### Overview

Product Name	Anti-NKX1-1 Antibody (Center)
Reactive Species	Human
Description	Boster Bio Anti-NKX1-1 Antibody (Center) (Catalog # A16315). Tested in WB, IF application(s). This antibody reacts with Human.
Application	IF, WB
Clonality	Polyclonal
Formulation	Purified polyclonal antibody supplied in PBS with 0.09% (W/V) sodium azide.
Storage Instructions	Maintain refrigerated at 2-8°C for up to 2 weeks. For long-term storage, store at -20°C in small aliquots to prevent freeze-thaw cycles.
Host	Rabbit
Uniprot ID	Q15270

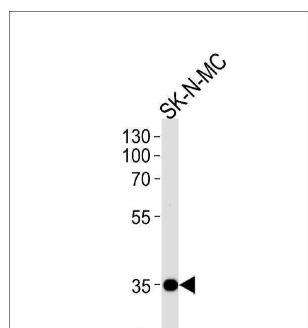
### Technical Details

Immunogen	This NKX1-1 antibody is generated from rabbits immunized with a KLH conjugated synthetic peptide between 230-258 amino acids from the Central region of human NKX1-1.
Predicted Reactive Species	Rat
Isotype	Rabbit IgG
Purification	This antibody is purified through a protein A column, followed by peptide affinity purification.
Suggested Dilutions	IF: 1:10-1:50 WB: 1:1000

## Anti-NKX1-1 Antibody (Center) (A16315) Images



Fluorescent confocal image of HeLa cell stained with NKX1-1 Antibody (Center). HeLa cells were fixed with 4% PFA (20 min), permeabilized with Triton X-100 (0.1%, 10 min), then incubated with NKX1-1 primary antibody (1:25, 1 h at 37°C). For secondary antibody, Alexa Fluor® 488 conjugated donkey anti-rabbit antibody (green) was used (1:400, 50 min at 37°C). Cytoplasmic actin was counterstained with Alexa Fluor® 555 (red) conjugated Phalloidin at 37°C. Nuclei were counterstained with DAPI (blue) (10 µg/ml, 10 min). NKX1-1 immunoreactivity is localized to Nucleus significantly.



NKX1-1 Antibody (Center) (Cat. #A16315) western blot analysis in SK-N-MC cell line lysates (35ug/lane). This demonstrates the NKX1-1 antibody detected the NKX1-1 protein (arrow).

## Submit a product review to Biocompare.com

Submit a review of this product to Biocompare.com to receive a \$20 Amazon.com giftcard! Your reviews help your fellow scientists make the right decisions. Thank you for your contribution.



Anti-NKX1-1 Antibody (Center)

For Research Use Only. Not for use in diagnostic procedures.