

Anti-Protein shisa-4 SHISA4 Antibody

Catalog Number: A16391

About SHISA4

SHISA4 plays an essential role in the maturation of presomitic mesoderm cells by individual attenuation of both FGF and WNT signaling. The Shisa family of single-transmembrane proteins is characterized by an N-terminal cysteine-rich domain and a proline-rich C-terminal region. Its founding member, *Xenopus Shisa*, promotes head development by antagonizing Wnt and FGF signaling. Shisa physically interacted with immature forms of the Wnt receptor Frizzled and the FGF receptor within the ER and inhibited their posttranslational maturation and trafficking to the cell surface. Loss of Shisa function sensitized the neuroectoderm to Wnt signaling and suppressed head formation during gastrulation.

Overview

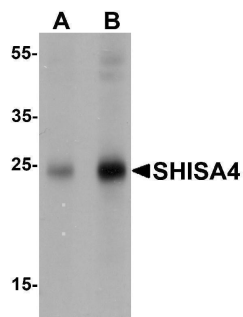
Product Name	Anti-Protein shisa-4 SHISA4 Antibody
Reactive Species	Human, Mouse
Description	Boster Bio Anti-Protein shisa-4 SHISA4 Antibody (Catalog # A16391). Tested in ELISA, WB, IHC-P, IF applications. This antibody reacts with Human, Mouse.
Application	ELISA, IF, IHC-P, WB
Clonality	Polyclonal
Formulation	SHISA4 Antibody is supplied in PBS containing 0.02% sodium azide.
Storage Instructions	SHISA4 antibody can be stored at 4°C for three months and -20°C, stable for up to one year.
Host	Rabbit
Uniprot ID	Q96DD7

Technical Details

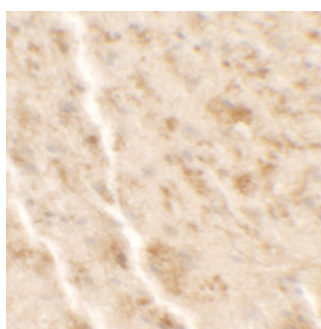
Immunogen	SHISA4 antibody was raised against a 15 amino acid peptide near the center of human SHISA4. The immunogen is located within amino acids 100 - 150 of SHISA4.
Predicted Reactive Species	Pig
Cross Reactivity	SHISA4 antibody is predicted to not cross-react with other SHISA protein family members.
Isotype	IgG
Form	Liquid
Concentration	1 mg/mL
Purification	SHISA4 Antibody is affinity chromatography purified via peptide column.
Suggested Dilutions	SHISA4 Antibody can be used for detection of SHISA4 by Western blot starting at 1 ug/mL.

Antibody validated: Western Blot in human samples; Immunohistochemistry in mouse samples and Immunofluorescence in mouse samples. All other applications and species not yet tested. Optimal dilutions for each application should be determined by the researcher.

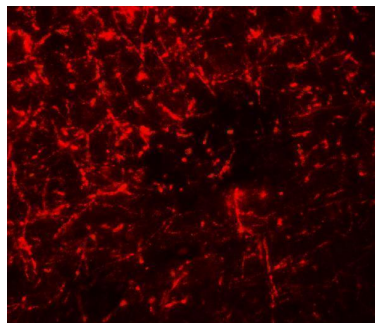
Anti-Protein shisa-4 SHISA4 Antibody (A16391) Images



Western blot analysis of SHISA4 in human brain tissue lysate with SHISA4 antibody at (A) 1 and (B) 2 ug/mL.



Immunohistochemistry of SHISA4 in mouse brain tissue with SHISA4 antibody at 2.5 ug/ml.



Immunofluorescence of SHISA4 in mouse brain tissue with SHISA4 antibody at 20 ug/ml.

Submit a product review to [Biocompare.com](https://www.biocompare.com)

Submit a review of this product to [Biocompare.com](https://www.biocompare.com) to receive a \$20 Amazon.com giftcard! Your reviews help your fellow scientists make the right decisions. Thank you for your contribution.



Anti-Protein shisa-4 SHISA4 Antibody

For Research Use Only. Not for use in diagnostic procedures.