

## Anti-LRRC45 Antibody (C-term)

Catalog Number: A16557

### About LRRC45

ZNF90 may be involved in transcriptional regulation.

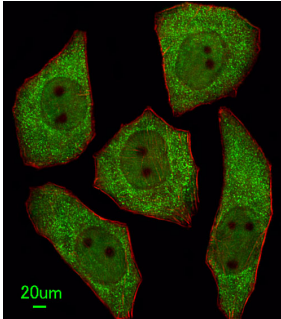
### Overview

Product Name	Anti-LRRC45 Antibody (C-term)
Reactive Species	Human
Description	Boster Bio Anti-LRRC45 Antibody (C-term) (Catalog # A16557). Tested in WB, IF, IHC-P, Flow Cytometry application(s). This antibody reacts with Human.
Application	Flow Cytometry, IF, IHC-P, WB
Clonality	Polyclonal
Formulation	Purified polyclonal antibody supplied in PBS with 0.09% (W/V) sodium azide.
Storage Instructions	Maintain refrigerated at 2-8°C for up to 2 weeks. For long-term storage, store at -20°C in small aliquots to prevent freeze-thaw cycles.
Host	Rabbit
Uniprot ID	Q96CN5

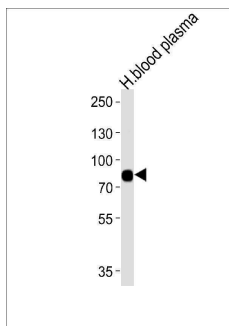
### Technical Details

Immunogen	This LRRC45 antibody is generated from rabbits immunized with a KLH conjugated synthetic peptide between 615-643 amino acids from the C-terminal region of human LRRC45.
Predicted Reactive Species	Rat
Isotype	Rabbit IgG
Purification	This antibody is purified through a protein A column, followed by peptide affinity purification.
Suggested Dilutions	IF: 1:25 WB: 1:1000 IHC-P: 1:50-1:100 FC: 1:10-1:50

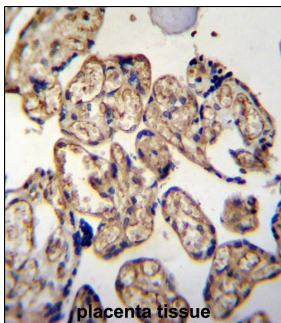
## Anti-LRRC45 Antibody (C-term) (A16557) Images



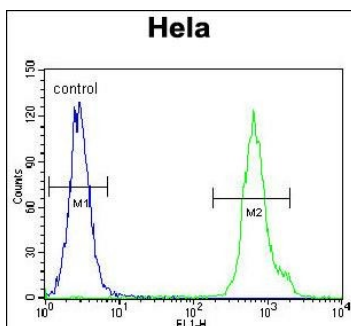
Immunofluorescent analysis of U251 cells, using LRRC45 Antibody (C-term). A16557 was diluted at 1:25 dilution. Alexa Fluor 488-conjugated goat anti-rabbit IgG at 1:400 dilution was used as the secondary antibody (green). Cytoplasmic actin was counterstained with Dylight Fluor® 554 (red) conjugated Phalloidin (red).



Western blot analysis of lysates from human blood plasma tissue (from left to right), using LRRC45 Antibody (C-term). A16557 was diluted at 1:1000 at each lane. A goat anti-rabbit IgG H&L(HRP) at 1:5000 dilution was used as the secondary antibody. Lysates at 35ug per lane.



LRRC45 Antibody (C-term) immunohistochemistry analysis in formalin fixed and paraffin embedded human placenta tissue followed by peroxidase conjugation of the secondary antibody and DAB staining. This data demonstrates the use of LRRC45 Antibody (C-term) for immunohistochemistry. Clinical relevance has not been evaluated.



LRRC45 Antibody (C-term) flow cytometric analysis of HeLa cells (right histogram) compared to a negative control cell (left histogram). FITC-conjugated goat-anti-rabbit secondary antibodies were used for the analysis.

Submit a product review to [Biocompare.com](https://www.biocompare.com)

Submit a review of this product to [Biocompare.com](https://www.biocompare.com) to receive a \$20 Amazon.com giftcard! Your reviews help your fellow scientists make the right decisions. Thank you for your contribution.



Anti-LRRC45 Antibody (C-term)

For Research Use Only. Not for use in diagnostic procedures.