

Anti-LDH6A LDHAL6A Antibody

Catalog Number: A16558

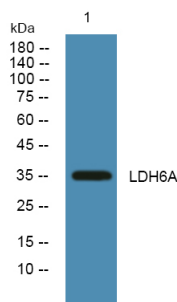
Overview

Product Name	Anti-LDH6A LDHAL6A Antibody
Reactive Species	Human
Description	Boster Bio Anti-LDH6A LDHAL6A Antibody catalog # A16558. Tested in WB, ELISA applications. This antibody reacts with Human.
Application	ELISA, WB
Clonality	Polyclonal
Formulation	Liquid form in PBS containing 50% glycerol, and 0.02% sodium azide.
Storage Instructions	Store at -20°C for one year. For short term storage and frequent use, store at 4°C for up to one month. Avoid repeated freeze-thaw cycles.
Host	Rabbit
Uniprot ID	Q6ZMR3

Technical Details

Immunogen	Synthesized peptide derived from human protein at AA range: 50-130
Isotype	IgG
Form	Liquid
Concentration	1 mg/ml
Purification	LDH6A antibody was affinity-purified from rabbit antiserum by affinity-chromatography using epitope-specific immunogen.
Suggested Dilutions	WB 1:500-2000 ELISA 1:5000-20000

Anti-LDH6A LDHAL6A Antibody (A16558) Images



Western blot analysis of lysates from Jurkat cells, primary antibody was diluted at 1:1000, 4° over night

1 Publications Citing This Product

1. PubMed ID: -, Jiang X, Yuan J, Dou Y, Zeng D, Xiao S. Lipopolysaccharide Affects the Proliferation and Glucose Metabolism of Cervical Cancer Cells Through the FRA1/MDM2/p53 Pathway. *Int J Med Sci* 2021;18(4): 1030-1038. doi:10.7150/ijms.47360.

Visit bosterbio.com/anti-ldh6a-ldhal6a-antibody-a16558-boster.html to see all 1 publications.

Submit a product review to Biocompare.com

Submit a review of this product to Biocompare.com to receive a \$20 Amazon.com giftcard! Your reviews help your fellow scientists make the right decisions. Thank you for your contribution.



Anti-LDH6A LDHAL6A Antibody

For Research Use Only. Not for use in diagnostic procedures.