

Anti-CSRNP2 (K127) Antibody

Catalog Number: A16562-1

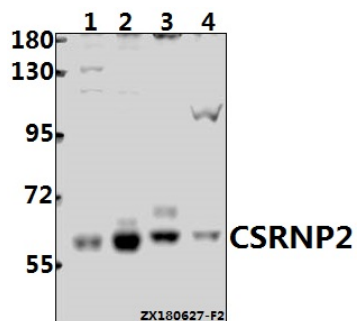
Overview

Product Name	Anti-CSRNP2 (K127) Antibody
Reactive Species	Human, Mouse, Rat
Description	Boster Bio Anti-CSRNP2 (K127) Antibody catalog # A16562-1. Tested in WB,IHC applications. This antibody reacts with Human,Mouse,Rat.
Application	IHC, WB
Clonality	Polyclonal
Formulation	Rabbit IgG, 1mg/ml in PBS with 0.02% sodium azide, 50% glycerol, pH7.2
Storage Instructions	Store at -20°C for one year. For short term storage and frequent use, store at 4°C for up to one month. Avoid repeated freeze-thaw cycles.
Host	Rabbit
Uniprot ID	Q9H175

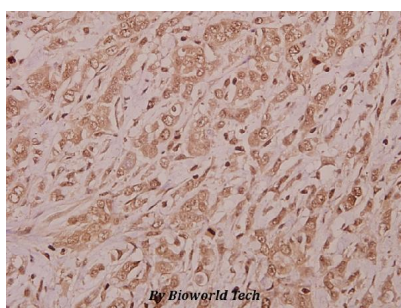
Technical Details

Immunogen	Synthetic peptide, corresponding to amino acids 96-140 of Human CSRNP2.
Isotype	IgG
Form	Liquid
Concentration	1 mg/ml
Purification	The antibody was affinity-purified from rabbit antiserum by affinity-chromatography using epitope-specific immunogen and the purity is > 95% (by SDS-PAGE).
Suggested Dilutions	WB: 1:500-1:1000 IHC: 1:50-1:200

Anti-CSRNP2 (K127) Antibody (A16562-1) Images



Western blot (WB) analysis of CSRNP2 (K127) pAb at 1:1000 dilution Lane1:HCT116 whole cell lysate(40ug) Lane2:H1792 whole cell lysate(40ug) Lane3:CT26 whole cell lysate(40ug) Lane4:H9C2 whole cell lysate(40ug)



Immunohistochemistry (IHC) analyzes of CSRNP2 (K127) pAb in paraffin-embedded human colorectal carcinoma tissue at 1:50.

Submit a product review to Biocompare.com

Submit a review of this product to Biocompare.com to receive a \$20 Amazon.com giftcard! Your reviews help your fellow scientists make the right decisions. Thank you for your contribution.



Anti-CSRNP2 (K127) Antibody

For Research Use Only. Not for use in diagnostic procedures.