

Anti-TMEM160 Antibody (N-term)

Catalog Number: A16694

About TMEM160

PIP5KL1 is a phosphoinositide kinase-like protein that lacks intrinsic lipid kinase activity but associates with type I PIPKs (see PIP5K1A; MIM 603275) and may play a role in localization of PIPK activity (Chang et al., 2004 [PubMed 14701839]).[supplied by OMIM].

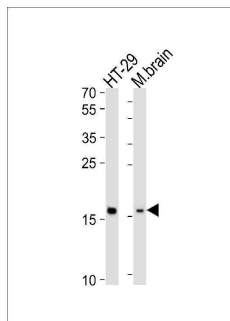
Overview

Product Name	Anti-TMEM160 Antibody (N-term)
Reactive Species	Human, Mouse
Description	Boster Bio Anti-TMEM160 Antibody (N-term) (Catalog # A16694). Tested in WB application(s). This antibody reacts with Human, Mouse.
Application	WB
Clonality	Polyclonal
Formulation	Purified polyclonal antibody supplied in PBS with 0.09% (W/V) sodium azide.
Storage Instructions	Maintain refrigerated at 2-8°C for up to 2 weeks. For long-term storage, store at -20°C in small aliquots to prevent freeze-thaw cycles.
Host	Rabbit
Uniprot ID	Q9NX00

Technical Details

Immunogen	This TMEM160 antibody is generated from a rabbit immunized with a KLH conjugated synthetic peptide between 32-64 amino acids from the N-terminal region of human TMEM160.
Predicted Reactive Species	Bovine
Isotype	Rabbit IgG
Purification	This antibody is purified through a protein A column, followed by peptide affinity purification.
Suggested Dilutions	WB: 1:1000

Anti-TMEM160 Antibody (N-term) (A16694) Images



Western blot analysis of lysates from HT-29 cell line, mouse brain tissue lysate (from left to right), using TMEM160 Antibody (N-term). A16694 was diluted at 1:1000 at each lane. A goat anti-rabbit IgG H&L (HRP) at 1:10000 dilution was used as the secondary antibody. Lysates at 20ug per lane.

Submit a product review to Biocompare.com

Submit a review of this product to Biocompare.com to receive a \$20 Amazon.com giftcard! Your reviews help your fellow scientists make the right decisions. Thank you for your contribution.



Anti-TMEM160 Antibody (N-term)

For Research Use Only. Not for use in diagnostic procedures.