

## Anti-RUFY4 Antibody Picoband®

Catalog Number: A16707-1

### About RUFY4

Enables phosphatidylinositol-3-phosphate binding activity. Involved in autophagosome assembly; cellular response to interleukin-4; and positive regulation of macroautophagy. Located in autophagosome.

### Overview

|                      |  |
|----------------------|--|
| Product Name         | Anti-RUFY4 Antibody Picoband®  |
| Reactive Species     | Human, Monkey  |
| Description          | Boster Bio Anti-RUFY4 Antibody Picoband® catalog # A16707-1. Tested in ELISA, Flow Cytometry, IHC, WB applications. This antibody reacts with Human, Monkey. The brand Picoband indicates this is a premium antibody that guarantees superior quality, high affinity, and strong signals with minimal background in Western blot applications. Only our best-performing antibodies are designated as Picoband, ensuring unmatched performance. |
| Application          | ELISA, Flow Cytometry, IHC, WB   |
| Clonality            | Polyclonal   |
| Formulation          | Each vial contains 4 mg Trehalose, 0.9 mg NaCl, 0.2 mg Na <sub>2</sub> HPO <sub>4</sub> .  |
| Storage Instructions | At -20°C for one year from date of receipt. After reconstitution, at 4°C for one month. It can also be aliquotted and stored frozen at -20°C for six months. Avoid repeated freezing and thawing.  |
| Host                 | Rabbit   |
| Uniprot ID           | Q6ZNE9   |

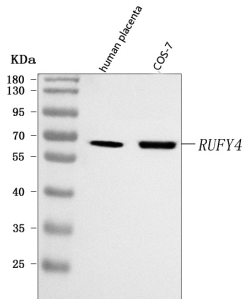
### Technical Details

|                               |  |
|-------------------------------|--|
| Immunogen                     | E.coli-derived human RUFY4 recombinant protein (Position: M1-K553).  |
| Recommended Detection Systems | Boster recommends Enhanced Chemiluminescent Kit with anti-Rabbit IgG (EK1002) for Western blot, and HRP Conjugated anti-Rabbit IgG Super Vision Assay Kit (SV0002-1) for IHC(P). |
| Cross Reactivity              | No cross-reactivity with other proteins.   |
| Isotype                       | Rabbit IgG   |
| Form                          | Lyophilized  |
| Concentration                 | Adding 0.2 ml of distilled water will yield a concentration of 500 µg/ml.  |
| Purification                  | Immunogen affinity purified.   |

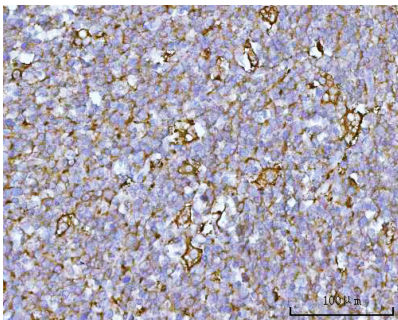
Suggested Dilutions

Western blot, 0.25-0.5 ug/ml, Human, Monkey  
Immunohistochemistry(Paraffin-embedded Section), 2-5 ug/ml, Human  
Flow Cytometry (Fixed), 1-3 ug/1x10<sup>6</sup> cells, Human  
ELISA, 0.1-0.5 ug/ml, -

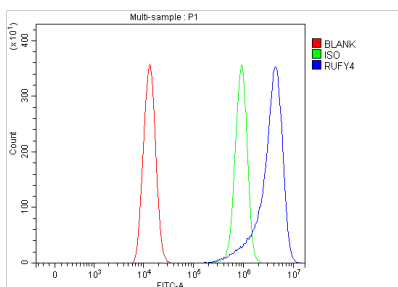
## Anti-RUFY4 Antibody Picoband® (A16707-1) Images



Western blot analysis of RUFY4 using anti-RUFY4 antibody (A16707-1). Electrophoresis was performed on a 5-20% SDS-PAGE gel at 70V (Stacking gel) / 90V (Resolving gel) for 2-3 hours. The sample well of each lane was loaded with 30 ug of sample under reducing conditions. Lane 1: human placenta tissue lysates, Lane 2: monkey COS-7 whole cell lysates. After electrophoresis, proteins were transferred to a nitrocellulose membrane at 150 mA for 50-90 minutes. Blocked the membrane with 5% non-fat milk/TBS for 1.5 hour at RT. The membrane was incubated with rabbit anti-RUFY4 antigen affinity purified polyclonal antibody (Catalog # A16707-1) at 0.5 ug/mL overnight at 4°C, then washed with TBS-0.1%Tween 3 times with 5 minutes each and probed with a goat anti-rabbit IgG-HRP secondary antibody at a dilution of 1:5000 for 1.5 hour at RT. The signal is developed using an Enhanced Chemiluminescent detection (ECL) kit (Catalog # EK1002) with Tanon 5200 system. A specific band was detected for RUFY4 at approximately 64 kDa. The expected band size for RUFY4 is at 64 kDa.

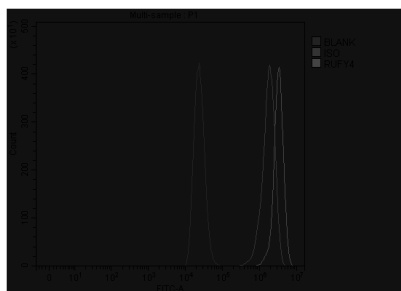


IHC analysis of RUFY4 using anti-RUFY4 antibody (A16707-1). RUFY4 was detected in a paraffin-embedded section of human tonsil tissue. Heat mediated antigen retrieval was performed in EDTA buffer (pH 8.0, epitope retrieval solution). The tissue section was blocked with 10% goat serum. The tissue section was then incubated with 2 ug/ml rabbit anti-RUFY4 Antibody (A16707-1) overnight at 4°C. Peroxidase Conjugated Goat Anti-rabbit IgG was used as secondary antibody and incubated for 30 minutes at 37°C. The tissue section was developed using HRP Conjugated Rabbit IgG Super Vision Assay Kit (Catalog # SV0002) with DAB as the chromogen.



Flow Cytometry analysis of HEL cells using anti-RUFY4 antibody (A16707-1). Overlay histogram showing HEL cells stained with A16707-1 (Blue line). To facilitate intracellular staining, cells were fixed with 4% paraformaldehyde and permeabilized with permeabilization buffer. The cells were blocked with 10% normal goat serum. And then incubated with rabbit anti-RUFY4 Antibody (A16707-1, 1 ug/1x10<sup>6</sup> cells) for 30 min at 20°C. DyLight®488 conjugated goat anti-rabbit IgG (BA1127, 5-10 ug/1x10<sup>6</sup> cells) was used as secondary antibody for 30 minutes at 20°C. Isotype control antibody (Green line) was rabbit IgG (1 ug/1x10<sup>6</sup>) used under the same conditions. Unlabelled sample without incubation with primary antibody and secondary antibody (Red line) was used as a blank control.

Flow Cytometry analysis of THP-1 cells using anti-RUFY4 antibody (A16707-1). Overlay histogram showing THP-1 cells stained with A16707-1 (Blue line). To facilitate intracellular staining, cells were fixed with 4% paraformaldehyde and



permeabilized with permeabilization buffer. The cells were blocked with 10% normal goat serum. And then incubated with rabbit anti-RUFY4 Antibody (A16707-1, 1 ug/1x10<sup>6</sup> cells) for 30 min at 20°C. DyLight®488 conjugated goat anti-rabbit IgG (BA1127, 5-10 ug/1x10<sup>6</sup> cells) was used as secondary antibody for 30 minutes at 20°C. Isotype control antibody (Green line) was rabbit IgG (1 ug/1x10<sup>6</sup>) used under the same conditions. Unlabelled sample without incubation with primary antibody and secondary antibody (Red line) was used as a blank control.

## Submit a product review to [Biocompare.com](https://www.biocompare.com)

Submit a review of this product to [Biocompare.com](https://www.biocompare.com) to receive a \$20 Amazon.com giftcard! Your reviews help your fellow scientists make the right decisions. Thank you for your contribution.



### Anti-RUFY4 Antibody

For Research Use Only. Not for use in diagnostic procedures.