

## Anti-Homeobox protein DBX2 DBX2 Antibody

Catalog Number: A16753

### About DBX2

DBX2 is a member of the developing brain homeobox (DBX) protein family, but while the related protein DBX1 is expressed in various regions of the developing brain, DBX2 shows a more restricted pattern of expression in the brain, and is also expressed in some mesenchymal cells such as limb buds and tooth germs. It is thought that DBX1 and DBX2 promote the development of a subset of interneurons, some of which help mediate left-right coordination of locomotor activity. In *Xenopus*, DBX2 is involved in primary neurogenesis and early neural plate patterning, and is thought to act as a cross-repressive partner of NKX6-2 in the patterning of the ventral neural tube.

### Overview

Product Name	Anti-Homeobox protein DBX2 DBX2 Antibody
Reactive Species	Human
Description	Boster Bio Anti-Homeobox protein DBX2 DBX2 Antibody (Catalog # A16753). Tested in ELISA, WB, IHC-P, IF applications. This antibody reacts with Human.
Application	ELISA, IF, IHC-P, WB
Clonality	Polyclonal Clone: SK7
Formulation	DBX2 Antibody is supplied in PBS containing 0.02% sodium azide.
Storage Instructions	DBX2 antibody can be stored at 4°C for three months and -20°C, stable for up to one year. Avoid repeated freeze-thaw cycles. Antibodies should not be exposed to prolonged high temperatures.
Host	Rabbit
Uniprot ID	Q6ZNG2

### Technical Details

Immunogen	DBX2 antibody was raised against a 16 amino acid synthetic peptide near the amino terminus of human DBX2. The immunogen is located within amino acids 30 - 80 of DBX2.
Predicted Reactive Species	Bovine, Pig
Cross Reactivity	DBX2 antibody is human specific. At least two isoforms of DBX2 are known to exist; this antibody will only detect the shortest isoform.
Isotype	IgG
Form	Liquid
Concentration	1 mg/mL
Purification	DBX2 Antibody is affinity chromatography purified via peptide column.

**Suggested Dilutions**

Dilute the sample so that the expected range of concentrations fall within the detection range of this kit.

If the expected range of concentration is unknown, a pilot test should be conducted to decide the optimal dilution ratio for your samples.

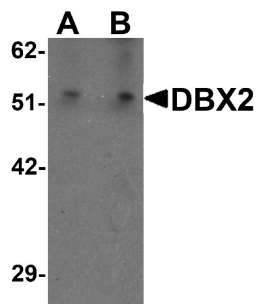
Some PubMed article(s) citing the expression level of this target are as follows:

Boster Bio's internal QC testing used:

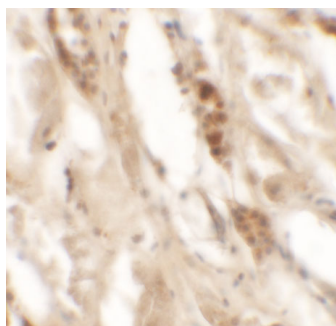
DBX2 antibody can be used for detection of DBX2 by Western blot at 1 and 2 ug/mL. Antibody can also be used for immunohistochemistry starting at 5 ug/mL. For immunofluorescence start at 5 ug/mL.

Antibody validated: Western Blot in rat samples; Immunohistochemistry in human samples and Immunofluorescence in human samples. All other applications and species not yet tested. Optimal dilutions for each application should be determined by the researcher.

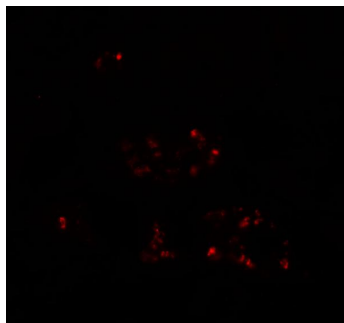
## Anti-Homeobox protein DBX2 DBX2 Antibody (A16753) Images



Western blot analysis of WDR18 in rat lung tissue lysate with WDR18 antibody at (A) 1 and (B) 2 ug/mL.



Immunohistochemistry of DBX2 in human kidney tissue with DBX2 antibody at 5 ug/mL.



Immunofluorescence of DBX2 in human kidney tissue with DBX2 antibody at 20 ug/mL.

## Submit a product review to Biocompare.com

Submit a review of this product to Biocompare.com to receive a \$20 Amazon.com giftcard! Your reviews help your fellow scientists make the right decisions. Thank you for your contribution.



Anti-Homeobox protein DBX2 DBX2 Antibody