

Anti-KHDC1 Antibody

Catalog Number: A16774

About KHDC1

KHDC1 family members are K-homology (KH) domain-containing RNA binding proteins that are involved in various aspects of RNA metabolism, ranging from transcription to RNA splicing, transportation, translation, and stability (1). KHDC1 is highly expressed in oocytes and interacts with cytoplasmic polyadenylation element-binding protein 1 (CPEB1), a key translational regulator controlling the polyA length of mRNAs (2,3). KHDC1 functions as a global translational repressor and induces apoptosis through an ER-dependent signaling pathway and that the C-terminal putative trans-membrane motif (TMM) is critical for its activities (3,4).

Overview

Product Name	Anti-KHDC1 Antibody
Reactive Species	Human, Mouse, Rat
Description	Boster Bio Anti-KHDC1 Antibody (Catalog # A16774). Tested in ELISA, WB, IHC-P applications. This antibody reacts with Human, Mouse, Rat.
Application	ELISA, IHC-P, WB
Clonality	Polyclonal
Formulation	KHDC1 Antibody is supplied in PBS containing 0.02% sodium azide.
Storage Instructions	KHDC1 antibody can be stored at 4°C for three months and -20°C, stable for up to one year.
Host	Rabbit
Uniprot ID	Q4VXA5

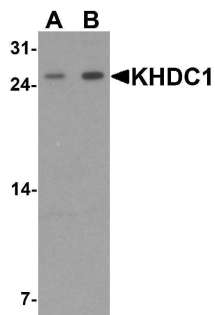
Technical Details

Immunogen	KHDC1 antibody was raised against a 15 amino acid peptide near the amino terminus of human KHDC1. The immunogen is located within amino acids 30 - 80 of KHDC1.
Predicted Reactive Species	Bovine, Pig
Cross Reactivity	KHDC1 antibody is human, mouse and rat reactive. At least three isoforms of KHDC1 are known to exist; this antibody will only detect the longest isoform.
Isotype	IgG
Form	Liquid
Concentration	1 mg/mL
Purification	KHDC1 Antibody is affinity chromatography purified via peptide column.

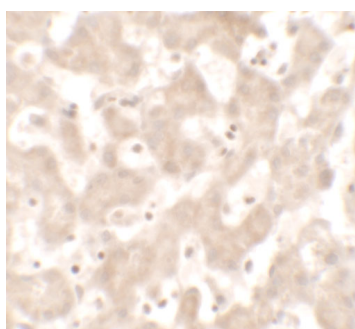
Suggested Dilutions

KHDC1 antibody can be used for detection of KHDC1 by Western blot at 1 - 2 ug/mL.
Antibody validated: Western Blot in rat samples and Immunohistochemistry in human samples. All other applications and species not yet tested. Optimal dilutions for each application should be determined by the researcher.

Anti-KHDC1 Antibody (A16774) Images



Western blot analysis of KHDC1 in rat liver tissue lysate with KHDC1 antibody at (A) 0.5 and (B) 1 ug/mL.



Immunohistochemistry of KHDC1 in human liver tissue with KHDC1 antibody at 5 ug/mL.

Submit a product review to [Biocompare.com](https://www.biocompare.com)

Submit a review of this product to [Biocompare.com](https://www.biocompare.com) to receive a \$20 Amazon.com giftcard! Your reviews help your fellow scientists make the right decisions. Thank you for your contribution.



Anti-KHDC1 Antibody

For Research Use Only. Not for use in diagnostic procedures.