

Anti-THEM6 Antibody Picoband®

Catalog Number: A16792-1

About THEM6

Predicted to be located in extracellular region.

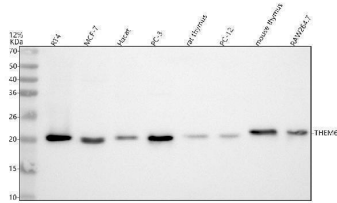
Overview

Product Name	Anti-THEM6 Antibody Picoband®
Reactive Species	Human, Mouse, Rat
Description	Boster Bio Anti-THEM6 Antibody Picoband® catalog # A16792-1. Tested in WB, ICC, IF, IP, Flow Cytometry, ELISA applications. This antibody reacts with Human, Mouse, Rat. The brand Picoband indicates this is a premium antibody that guarantees superior quality, high affinity, and strong signals with minimal background in Western blot applications. Only our best-performing antibodies are designated as Picoband, ensuring unmatched performance.
Application	ELISA, Flow Cytometry, IP, IF, ICC, WB
Clonality	Polyclonal
Formulation	Each vial contains 4 mg Trehalose, 0.9 mg NaCl, 0.2 mg Na ₂ HPO ₄ .
Storage Instructions	At -20°C for one year from date of receipt. After reconstitution, at 4°C for one month. It can also be aliquotted and stored frozen at -20°C for six months. Avoid repeated freezing and thawing.
Host	Rabbit
Uniprot ID	Q8WUY1

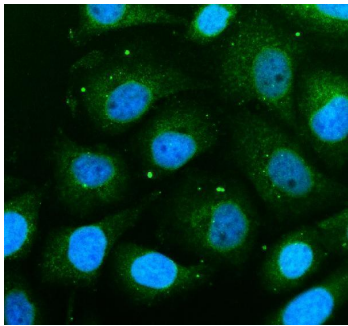
Technical Details

Immunogen	E.coli-derived human THEM6 recombinant protein (Position: Y23-Q208). Human THEM6 shares 89.2% and 88.7% amino acid (aa) sequence identity with mouse and rat THEM6, respectively.
Form	Lyophilized
Concentration	Adding 0.2 ml of distilled water will yield a concentration of 500 ug/ml.
Purification	Immunogen affinity purified.
Suggested Dilutions	Western blot, 0.25-0.5 ug/ml, Human, Mouse, Rat Immunocytochemistry/Immunofluorescence, 5 ug/ml, Human Immunoprecipitation, 0.5-2 ug/ml, Human Flow Cytometry (Fixed), 1-3 ug/1x10 ⁶ cells, Human ELISA, 0.1-0.5 ug/ml

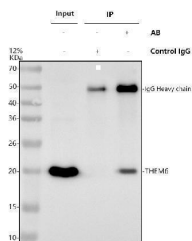
Anti-THEM6 Antibody Picoband® (A16792-1) Images



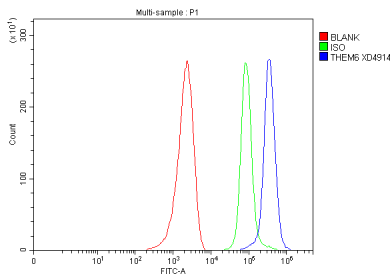
Western blot analysis of THEM6 using anti-THEM6 antibody (A16792-1). Electrophoresis was performed on a 12% SDS-PAGE gel at 80V (Stacking gel) / 120V (Resolving gel) for 2 hours. The sample well of each lane was loaded with 30 ug of sample under reducing conditions. Lane 1: human RT4 whole cell lysates, Lane 2: human MCF-7 whole cell lysates, Lane 3: human Hacat whole cell lysates, Lane 4: human PC-3 whole cell lysates, Lane 5: rat thymus tissue lysates, Lane 6: rat PC-12 whole cell lysates, Lane 7: mouse thymus tissue lysates, Lane 8: mouse RAW264.7 whole cell lysates. After electrophoresis, proteins were transferred to a nitrocellulose membrane at 150 mA for 50-90 minutes. Blocked the membrane with 5% non-fat milk/TBS for 1.5 hour at RT. The membrane was incubated with rabbit anti-THEM6 antigen affinity purified polyclonal antibody (A16792-1) at 0.5 ug/mL overnight at 4°C, then washed with TBS-0.1%Tween 3 times with 5 minutes each and probed with a goat anti-rabbit IgG-HRP secondary antibody at a dilution of 1:5000 for 1.5 hour at RT. The signal is developed using an ECL Plus Western Blotting Substrate (Catalog # AR1196-200) with Tanon 5200 system. A specific band was detected for THEM6 at approximately 20 kDa. The expected band size for THEM6 is at 24 kDa.



IF analysis of THEM6 using anti-THEM6 antibody (A16792-1). THEM6 was detected in an immunocytochemical section of SIHA cells. Enzyme antigen retrieval was performed using IHC enzyme antigen retrieval reagent (AR0022) for 15 mins. The cells were blocked with 10% goat serum. And then incubated with 5 ug/mL rabbit anti-THEM6 Antibody (A16792-1) overnight at 4°C. DyLight®488 Conjugated Goat Anti-Rabbit IgG (BA1127) was used as secondary antibody at 1:500 dilution and incubated for 30 minutes at 37°C. The section was counterstained with DAPI. Visualize using a fluorescence microscope and filter sets appropriate for the label used.



Immunoprecipitating THEM6 in PC-3 whole cell lysate. Western blot analysis of THEM6 using anti-THEM6 antibody (A16792-1). Lane 1: PC-3 whole cell lysates (30ug), Lane 2: Rabbit control IgG instead of anti-THEM6 antibody in PC-3 whole cell lysate, Lane 3: anti-THEM6 antibody (2ug) + PC-3 whole cell lysate (500ug). After electrophoresis, proteins were transferred to a membrane. Then the membrane was incubated with rabbit anti-THEM6 antigen affinity purified polyclonal antibody (A16792-1) at a dilution of 0.5 ug/mL and probed with a goat anti-rabbit IgG-HRP secondary antibody (Catalog # BA1054). The signal is developed using ECL Plus Western Blotting Substrate (Catalog # AR1197). A specific band was detected for THEM6 at approximately 20 kDa. The expected band size for THEM6 is at 24 kDa.



Flow Cytometry analysis of MCF-7 cells using anti-THEM6 antibody (A16792-1). Overlay histogram showing MCF-7 cells stained with A16792-1 (Blue line). The cells were fixed with 4% paraformaldehyde and blocked with 10% normal goat serum. And then incubated with rabbit anti-THEM6 Antibody (A16792-1, 1 ug/1x10⁶ cells) for 30 min at 20°C. DyLight® 488 conjugated goat anti-rabbit IgG (BA1127, 5-10 ug/1x10⁶ cells) was used as secondary antibody for 30 minutes at 20°C. Isotype control antibody (Green line) was rabbit IgG (1 ug/1x10⁶) used under the same conditions. Unlabelled sample without incubation with primary antibody and secondary antibody (Red line) was used as a blank control.

Submit a product review to Biocompare.com

Submit a review of this product to Biocompare.com to receive a \$20 Amazon.com giftcard! Your reviews help your fellow scientists make the right decisions. Thank you for your contribution.



Anti-THEM6 Antibody

For Research Use Only. Not for use in diagnostic procedures.