

Anti-C18orf42 AKAIN1 Antibody

Catalog Number: A16809

About C18ORF42

Little is known of the function of the protein encoded by Chromosome 18 open reading frame 18 (C18orf42), but it is preferentially expressed in neuronal tissue (1). It is thought to bind to the cAMP-dependent protein kinase A (PKA) and regulation its interaction with members of the A-kinase anchoring protein (AKAP) family (1).

Overview

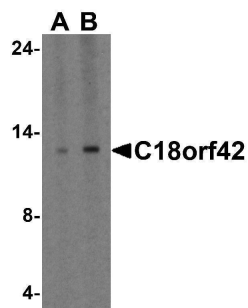
Product Name	Anti-C18orf42 AKAIN1 Antibody
Reactive Species	Human
Description	Boster Bio Anti-C18orf42 AKAIN1 Antibody (Catalog # A16809). Tested in ELISA, WB, ICC, IF applications. This antibody reacts with Human.
Application	ELISA, IF, ICC, WB
Clonality	Polyclonal
Formulation	C18orf42 Antibody is supplied in PBS containing 0.02% sodium azide.
Storage Instructions	C18orf42 antibody can be stored at 4°C for three months and -20°C, stable for up to one year.
Host	Rabbit
Uniprot ID	P0CW23

Technical Details

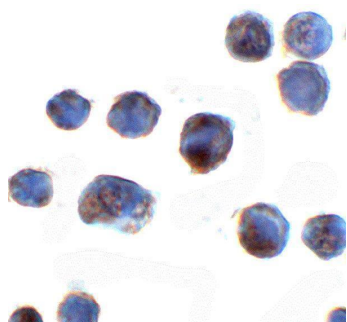
Immunogen	C18orf42 antibody was raised against a 16 amino acid peptide from near the center of human C18orf42. The immunogen is located within the last 50 amino acids of C18orf42.
Predicted Reactive Species	Bovine, Pig
Cross Reactivity	C18orf42 antibody is human specific.
Isotype	IgG
Form	Liquid
Concentration	1 mg/mL
Purification	C18orf42 Antibody is affinity chromatography purified via peptide column.
Suggested Dilutions	C18orf42 antibody can be used for the detection of C18orf42 by Western blot at 1 - 2 ug/mL. Antibody can also be used for Immunocytochemistry starting at 2 ug/mL. For immunofluorescence start at 2 ug/mL.

Antibody validated: Western Blot in human samples; Immunocytochemistry in human samples and Immunofluorescence in human samples. All other applications and species not yet tested. Optimal dilutions for each application should be determined by the researcher.

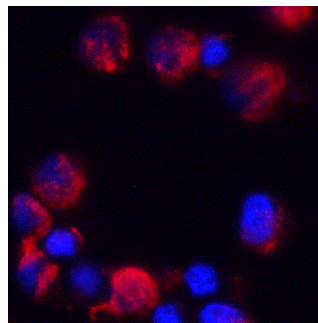
Anti-C18orf42 AKAIN1 Antibody (A16809) Images



Western blot analysis of C18orf42 in HeLa cell lysate with C18orf42 antibody at 1 ug/ml.



Immunocytochemistry of C18orf42 in HeLa cells with C18orf42 antibody at 2 ug/mL.



Immunofluorescence of C18orf42 in HeLa cells with C18orf42 antibody at 2 ug/mL. Red: C18orf42 Antibody (A16809) Blue: DAPI staining

Submit a product review to [Biocompare.com](https://www.biocompare.com)

Submit a review of this product to [Biocompare.com](https://www.biocompare.com) to receive a \$20 Amazon.com giftcard! Your reviews help your fellow scientists make the right decisions. Thank you for your contribution.



Anti-C18orf42 AKAIN1 Antibody

For Research Use Only. Not for use in diagnostic procedures.