

## Anti-Olfactory receptor 2Y1 OR2Y1 Antibody

Catalog Number: A16880

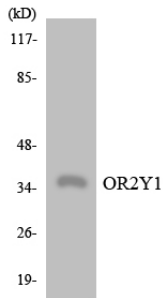
### Overview

|                      |  |
|----------------------|--|
| Product Name         | Anti-Olfactory receptor 2Y1 OR2Y1 Antibody   |
| Reactive Species     | Human, Mouse, Rat  |
| Description          | Boster Bio Anti-Olfactory receptor 2Y1 OR2Y1 Antibody (Catalog# A16880). Tested in WB, ICC, IF, ELISA applications. This antibody reacts with Human, Mouse, Rat.   |
| Application          | ELISA, IF, ICC, WB   |
| Clonality            | Polyclonal   |
| Formulation          | PBS containing 50% glycerol, 0.5% stabilizing protein and 0.02% sodium azide.<br>This antibody is supplied in a stabilized formulation.<br>Compatibility with conjugation reactions depends on the chemistry of the conjugation method used.<br>For conjugation methods that are not compatible with the stabilizing components present in this formulation, a carrier-free antibody format is required. |
| Storage Instructions | Store at -20°C for one year. For short-term storage and frequent use, store at 4°C for up to one month. Avoid repeated freeze-thaw cycles.   |
| Host                 | Rabbit   |
| Uniprot ID           | Q8NGV0   |

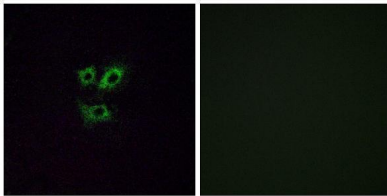
### Technical Details

|                     |  |
|---------------------|--|
| Immunogen           | A peptide derived from human OR2Y1. Immunogen sequence location: 161 - 210                               |
| Isotype             | Rabbit IgG   |
| Form                | Liquid   |
| Concentration       | 0.5-1mg/ml, actual concentration vary by lot. Use suggested dilution ratio to decide dilution procedure. |
| Purification        | The antibody was purified from rabbit antiserum by affinity-chromatography using immunogen.              |
| Suggested Dilutions | WB 1:500 - 1:2000.<br>ICC/IF 1:200 - 1:1000.<br>ELISA: 1:10000.<br>Not yet tested in other applications. |

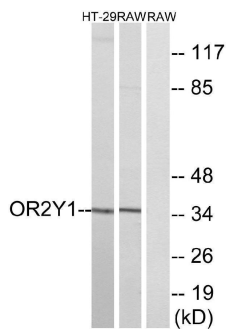
## Anti-Olfactory receptor 2Y1 OR2Y1 Antibody (A16880) Images



Western blot analysis of the lysates from K562 cells using OR2Y1 antibody.



Immunofluorescence analysis of A549 cells, using OR2Y1 Antibody. The picture on the right is blocked with the synthesized peptide.



Western blot analysis of lysates from RAW264.7 and HT-29 cells, using OR2Y1 Antibody. The lane on the right is blocked with the synthesized peptide.

### Submit a product review to Biocompare.com

Submit a review of this product to Biocompare.com to receive a \$20 Amazon.com giftcard! Your reviews help your fellow scientists make the right decisions. Thank you for your contribution.



Anti-Olfactory receptor 2Y1 OR2Y1 Antibody

For Research Use Only. Not for use in diagnostic procedures.