

Anti-SPATA20 Antibody Picoband®

Catalog Number: A17005-1

About SPATA20

SPATA20 (Spermatogenesis Associated 20), located on human chromosome 17q21.33, is a member of thioredoxin family. The human SPATA20 gene, also known as SSP411, Tisp78 and HEL-S-98, encodes an 87899 Da protein containing 786 amino acids. The SPATA20 protein is broadly expressed in testis, thyroid and other tissues. The SPATA20 gene is conserved in chimpanzee, Rhesus monkey, dog, cow, mouse, rat, chicken, etc. 336 organisms have orthologs with human gene SPATA20. SPATA20 is associated with some diseases, including Common Bile Duct Disease and Cholelithiasis.

Overview

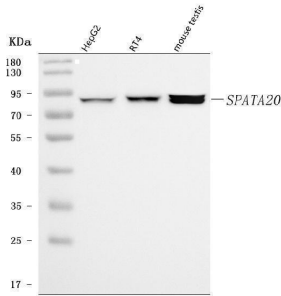
Product Name	Anti-SPATA20 Antibody Picoband®
Reactive Species	Human, Mouse
Description	Boster Bio Anti-SPATA20 Antibody Picoband® catalog # A17005-1. Tested in ELISA, Flow Cytometry, WB applications. This antibody reacts with Human, Mouse. The brand Picoband indicates this is a premium antibody that guarantees superior quality, high affinity, and strong signals with minimal background in Western blot applications. Only our best-performing antibodies are designated as Picoband, ensuring unmatched performance.
Application	ELISA, Flow Cytometry, WB
Clonality	Polyclonal
Formulation	Each vial contains 4 mg Trehalose, 0.9 mg NaCl, 0.2 mg Na ₂ HPO ₄ .
Storage Instructions	At -20°C for one year from date of receipt. After reconstitution, at 4°C for one month. It can also be aliquotted and stored frozen at -20°C for six months. Avoid repeated freezing and thawing.
Host	Rabbit
Uniprot ID	Q8TB22

Technical Details

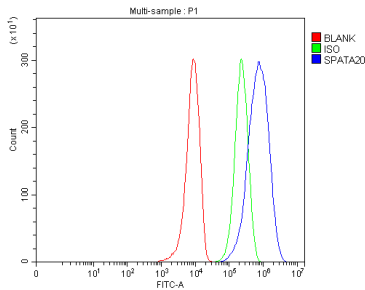
Immunogen	E.coli-derived human SPATA20 recombinant protein (Position: K396-P786).
Recommended Detection Systems	Boster recommends Enhanced Chemiluminescent Kit with anti-Rabbit IgG (EK1002) for Western blot.
Cross Reactivity	No cross-reactivity with other proteins.
Isotype	Rabbit IgG
Form	Lyophilized
Concentration	Adding 0.2 ml of distilled water will yield a concentration of 500 µg/ml.

Purification	Immunogen affinity purified.
Suggested Dilutions	Western blot, 0.25-0.5 ug/ml, Human, Mouse Flow Cytometry (Fixed), 1-3 ug/1x10 ⁶ cells, Human ELISA, 0.1-0.5 ug/ml, -

Anti-SPATA20 Antibody Picoband® (A17005-1) Images



Western blot analysis of SPATA20 using anti-SPATA20 antibody (A17005-1). Electrophoresis was performed on a 5-20% SDS-PAGE gel at 70V (Stacking gel) / 90V (Resolving gel) for 2-3 hours. The sample well of each lane was loaded with 30 ug of sample under reducing conditions. Lane 1: human HepG2 whole cell lysates, Lane 2: human RT4 whole cell lysates, Lane 3: mouse testis tissue lysates. After electrophoresis, proteins were transferred to a nitrocellulose membrane at 150 mA for 50-90 minutes. Blocked the membrane with 5% non-fat milk/TBS for 1.5 hour at RT. The membrane was incubated with rabbit anti-SPATA20 antigen affinity purified polyclonal antibody (Catalog # A17005-1) at 0.5 ug/mL overnight at 4°C, then washed with TBS-0.1%Tween 3 times with 5 minutes each and probed with a goat anti-rabbit IgG-HRP secondary antibody at a dilution of 1:5000 for 1.5 hour at RT. The signal is developed using an Enhanced Chemiluminescent detection (ECL) kit (Catalog # EK1002) with Tanon 5200 system. A specific band was detected for SPATA20 at approximately 88 kDa. The expected band size for SPATA20 is at 88 kDa.



Flow Cytometry analysis of 293T cells using anti-SPATA20 antibody (A17005-1). Overlay histogram showing 293T cells stained with A17005-1 (Blue line). To facilitate intracellular staining, cells were fixed with 4% paraformaldehyde and permeabilized with permeabilization buffer. The cells were blocked with 10% normal goat serum. And then incubated with rabbit anti-SPATA20 Antibody (A17005-1, 1 ug/1x10⁶ cells) for 30 min at 20°C. DyLight®488 conjugated goat anti-rabbit IgG (BA1127, 5-10 ug/1x10⁶ cells) was used as secondary antibody for 30 minutes at 20°C. Isotype control antibody (Green line) was rabbit IgG (1 ug/1x10⁶) used under the same conditions. Unlabelled sample without incubation with primary antibody and secondary antibody (Red line) was used as a blank control.

Submit a product review to Biocompare.com

Submit a review of this product to Biocompare.com to receive a \$20 Amazon.com giftcard! Your reviews help your fellow scientists make the right decisions. Thank you for your contribution.



Anti-SPATA20 Antibody

For Research Use Only. Not for use in diagnostic procedures.