

Anti-IZUMO2 Antibody (Center)

Catalog Number: A17024

About IZUMO2

PIP5KL1 is a phosphoinositide kinase-like protein that lacks intrinsic lipid kinase activity but associates with type I PIPKs (see PIP5K1A; MIM 603275) and may play a role in localization of PIPK activity (Chang et al., 2004 [PubMed 14701839]).[supplied by OMIM].

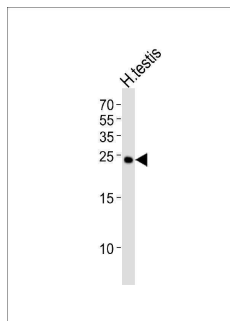
Overview

Product Name	Anti-IZUMO2 Antibody (Center)
Reactive Species	Human
Description	Boster Bio Anti-IZUMO2 Antibody (Center) (Catalog # A17024). Tested in IHC-P, WB application(s). This antibody reacts with Human.
Application	IHC-P, WB
Clonality	Polyclonal
Formulation	Purified polyclonal antibody supplied in PBS with 0.09% (W/V) sodium azide.
Storage Instructions	Maintain refrigerated at 2-8°C for up to 2 weeks. For long-term storage, store at -20°C in small aliquots to prevent freeze-thaw cycles.
Host	Rabbit
Uniprot ID	Q6UXV1

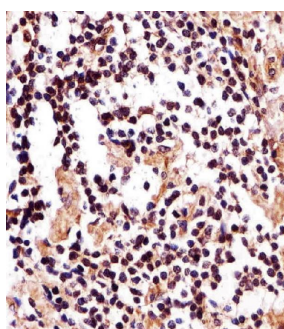
Technical Details

Immunogen	This IZUMO2 antibody is generated from a rabbit immunized with a KLH conjugated synthetic peptide between 90-124 amino acids from the Central region of human IZUMO2.
Predicted Reactive Species	Bovine
Isotype	Rabbit IgG
Purification	This antibody is purified through a protein A column, followed by peptide affinity purification.
Suggested Dilutions	WB: 1:1000 IHC-P: 1:25

Anti-IZUMO2 Antibody (Center) (A17024) Images



Western blot analysis of lysate from human testis tissue lysate, using IZUMO2 Antibody (Center). A17024 was diluted at 1:1000. A goat anti-rabbit IgG H&L (HRP) at 1:5000 dilution was used as the secondary antibody. Lysate at 35ug.



Immunohistochemical analysis of paraffin-embedded H. lymph section using IZUMO2 Antibody (Center) (Cat#A17024). A17024 was diluted at 1:25 dilution. A undiluted biotinylated goat polyvalent antibody was used as the secondary, followed by DAB staining.

Submit a product review to [Biocompare.com](https://www.biocompare.com)

Submit a review of this product to [Biocompare.com](https://www.biocompare.com) to receive a \$20 Amazon.com giftcard! Your reviews help your fellow scientists make the right decisions. Thank you for your contribution.



Anti-IZUMO2 Antibody (Center)

For Research Use Only. Not for use in diagnostic procedures.