

## Anti-GEMC1 GMNC Antibody

Catalog Number: A17100

### About GEMC1

The Geminin coiled-coil domain-containing protein 1 (GEMC1) is a highly conserved protein that is required for chromosomal replication. GEMC1 contains a region similar to the coiled-coil domain of geminin, an essential vertebrate replication protein in which the coiled-coil domain is required for the function. GEMC1 binds to the checkpoint and replication factor TopBP1, allowing the binding of GEMC1 to chromatin during pre-replication complex formation. GEMC1 also directly interacts with replication factors Cdc45 and Cdk2-CyclinE and stimulates the initiation of DNA replication. Depletion of GEMC1 by siRNA in embryonic and somatic vertebrate cells prevents DNA replication due to impairment of Cdc45 loading onto chromatin, suggesting GEMC1 promotes initiation of DNA replication by mediating TopBP1 and Cdk2 dependent recruitment of Cdc45 onto replication origins.

### Overview

Product Name	Anti-GEMC1 GMNC Antibody
Reactive Species	Human, Mouse
Description	Boster Bio Anti-GEMC1 GMNC Antibody (Catalog # A17100). Tested in ELISA, WB applications. This antibody reacts with Human, Mouse.
Application	ELISA, WB
Clonality	Polyclonal
Formulation	GEMC1 Antibody is supplied in PBS containing 0.02% sodium azide.
Storage Instructions	GEMC1 antibody can be stored at 4°C for three months and -20°C, stable for up to one year. Avoid repeated freeze-thaw cycles. Antibodies should not be exposed to prolonged high temperatures.
Host	Rabbit
Uniprot ID	A6NCL1

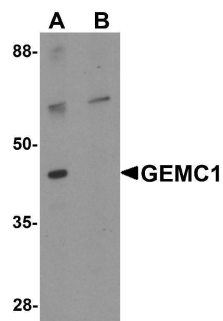
### Technical Details

Immunogen	GEMC1 antibody was raised against a 19 amino acid synthetic peptide near the center of human GEMC1. The immunogen is located within amino acids 130 - 180 of GEMC1.
Predicted Reactive Species	Bovine, Pig
Isotype	IgG
Form	Liquid
Concentration	1 mg/mL
Purification	GEMC1 Antibody is affinity chromatography purified via peptide column.

Suggested Dilutions

GEMC1 antibody can be used for detection of GEMC1 by Western blot at 1 ug/mL.  
Antibody validated: Western Blot in mouse samples. All other applications and species not yet tested. Optimal dilutions for each application should be determined by the researcher.

## Anti-GEMC1 GMNC Antibody (A17100) Images



Western blot analysis of GEMC1 in mouse heart tissue lysate with GEMC1 antibody at 1 ug/mL in (A) the absence and (B) the presence of blocking peptide

### Submit a product review to Biocompare.com

Submit a review of this product to Biocompare.com to receive a \$20 Amazon.com giftcard! Your reviews help your fellow scientists make the right decisions. Thank you for your contribution.



Anti-GEMC1 GMNC Antibody

For Research Use Only. Not for use in diagnostic procedures.